



Distributed Ledger Technologies to enable the Future of Trade

A joint approach by
KATLAS Technology and d-fine

16 June 2023
remote

d-fine

analytical. quantitative. tech.

Current Situation of Trade in a World prior to Web 3.0

Classic data-driven approaches do not respect the ownership of data



Autonomy

What happens to **my** business data?



Irrefutability

Can we trust the **source of data** without compromising privacy?



Security

Is my data really **secure**?



Interoperability

How do we **manage** various data streams?

Distributed ledger technologies in trade offer value to all stakeholders: Privacy and irrefutability of data, scalability and interoperability of solutions, patient-empowerment and ethical conduct of business.

KATLAS Technology developed a universal platform as a technological backbone to support Web 3.0 approaches

Web 3.0 Security by Design enables...

Verifiable credentials are issued to the respective patients' or customers' digital wallet. Authenticity can now be confirmed without need to contact issuer.

Data Protection:
private data is stored off-chain (with custodial option) ensuring control and consent (HIPAA, GDPR, DPDP)



Scalability:
Suppliers can easily set-up unlimited e-wallets with plug-in services for recurring revenues

Role to Role Protocols: ensure computers confirm identity and automate services safely



Paper compatibility:
Incremental transformation journey unlocked

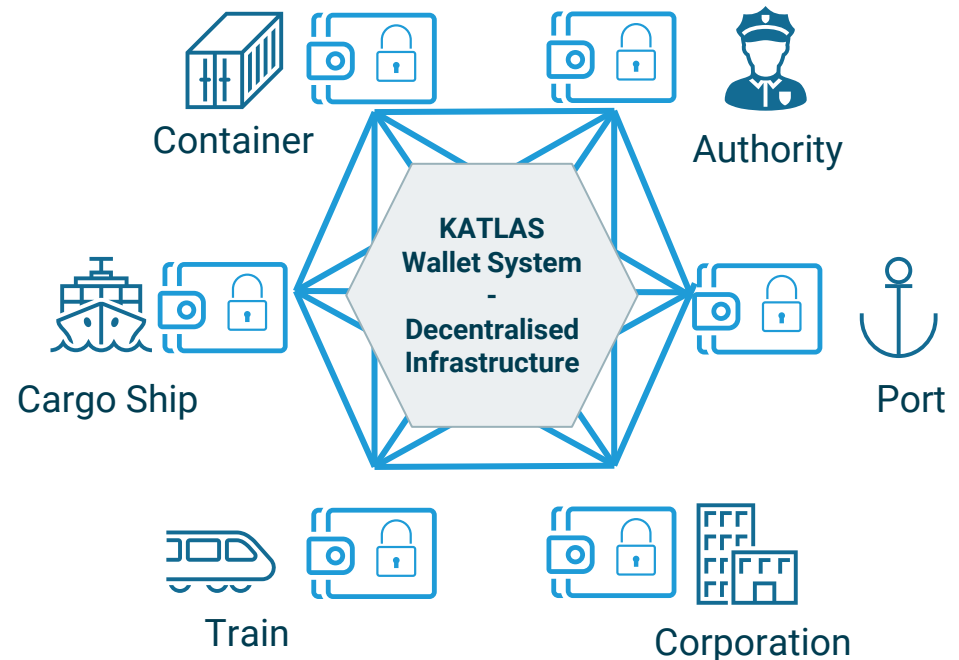


International Trade Council – Category IT: Enterprise Blockchain in recognition for their system for managing 'The Cardiovascular Health Patient Journey'.



Tier 1 Partners Digital Security by Design, Digital Catapult, UK Research & Innovation

... a network in which data is shared securely.



Proven technology is key to start your journey towards a new era of how to construct data-driven solutions. Into a future that is driven by security by design, privacy and consent.

Our Approach to the Future of Cargo

Orchestrating the diversity of devices and stakeholders in trade

Cargo

Vehicles and containers

Governance

Ports and stakeholders

Security by design and verified credentials



Container



Train



Cargo Ship



KATLAS Wallet System – Interoperability Layer



Authority



Port



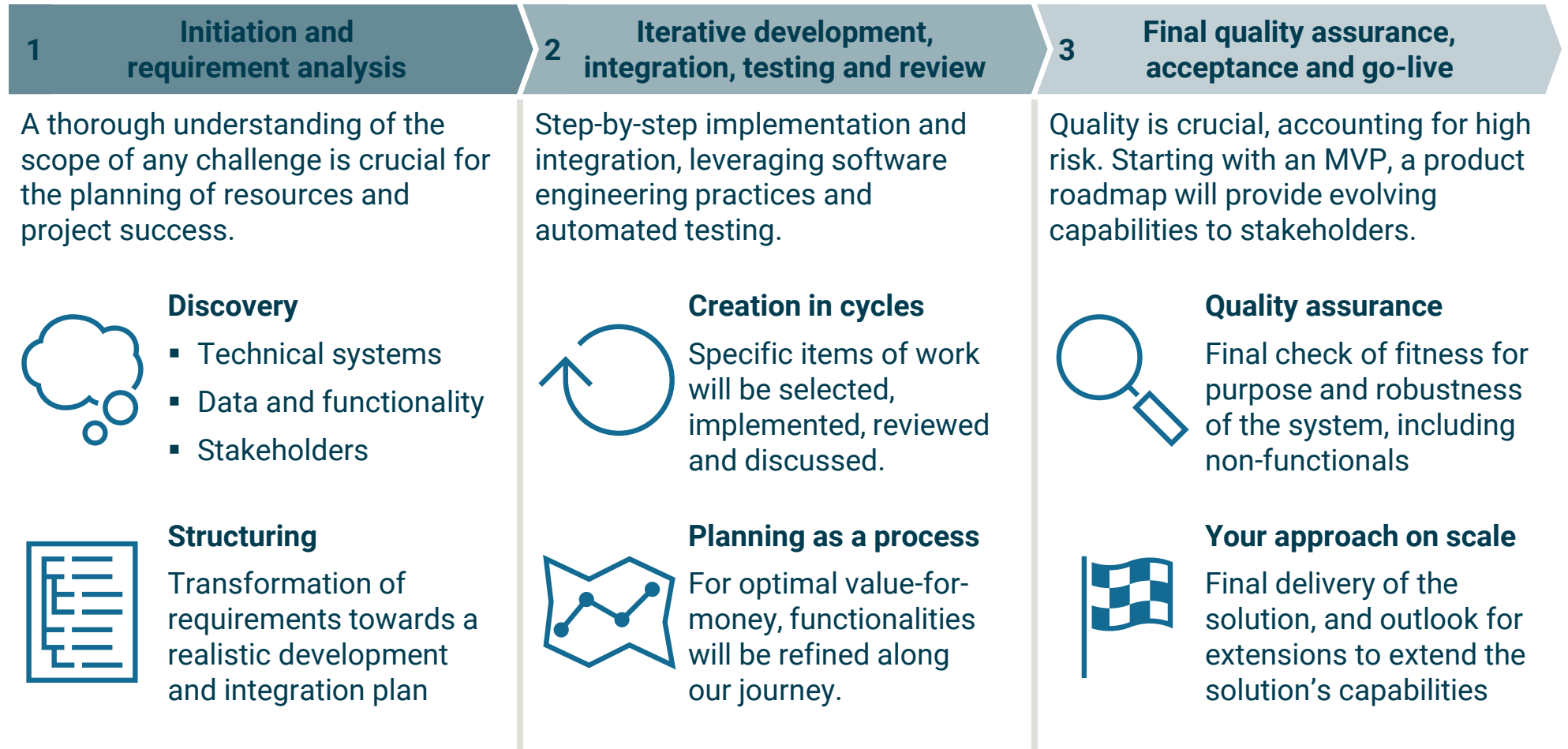
Corporation

Smart algorithms operating on trade data

- ✓ **Light-weight**
- ✓ **Security**
- ✓ **Data-driven intelligence**
- ✓ **Interoperability**
- ✓ **Tokenization**

The KATLAS Wallet system offers a light-weight infrastructure serving as backbone technology to facilitate data exchange, representing real world assets and their interactions in the digital world.

Co-designing and co-creating a Web 3.0 solutions across industries – enabling a distributed governance alternative for a sustainable future



A clear understanding of crucial capabilities is important to yield a successful implementation story. Therefore, we offer to engage on a common journey – as professional partners, based on trust and respect.

Two strong partners joining forces to realize your vision, leveraging privacy-enhancing technology and smart use of data



KATLAS
Accelerating innovation

- Proven technology backbone
- Universal system design
- Technology specialists
- Network in tech and academia
- Thrive for quality
- Future-proof, scalable technology
- Specialized experience in privacy-enhancing technologies

Holistic capabilities
for our clients

Established partnership –
effective delivery



Common scientific
mindset

Joint design
thinking approach

d-fine

- Data science and analytics expertise
- Integrating solutions
- Business analysis skills
- Cross-industry expert network
- Software engineering capabilities
- Long-term partner
- Vast experience in digital solution design

Speaking the languages of business, subject matter expertise and technology, we provide all success factors to realize your product vision, creating a sustainable solution in a long-term partnership.

KATLAS Technology is a platform provider, dedicated to unlock Web 3.0 applications across industries.

KATLAS platform consists of 5 layers



Use case: Sector-agnostic platform allows platform deployment for healthcare, financial services, trading, agriculture, etc.



Solution integration: Technology can be integrated with existing apps via standard interfaces, delivered on-premises or as SaaS



Risk and Compliance: Strong risk and compliance framework, enabling third-party certifications



Proprietary software: Cybersecurity features enable sharing of verifiable credentials across a decentralized infrastructure



Hardware compatibility: Light-weight solution can be implemented on variety of systems such as wearable devices and experimental SoCs

The people behind KATLAS



Edward Cole (KATLAS CEO)

Team leadership, space insurance, innovation, markets risk management and reporting, automated trading & settlement platforms



Marcos Mayorga (CTO & Lead Developer)

Computer cryptographic security, consensus and governance, Airbus simulation, engineering on hardware and network resilience

The KATLAS platform has proven its capabilities in various use cases – acknowledged by international awards on the cutting-edge of technology.

d-fine is a European consultancy focusing on analytical, quantitative and technological endeavours

Our DNA

analytical.

We address your challenges in a structured manner and investigate key drivers using our extensive domain expertise.

quantitative.

We leverage methods from Mathematics, Physics and Data Science to solve complex issues.

tech.

We apply new and established technologies to support your business processes and ensure a dynamic and sustainable implementation into your IT ecosystem.

Our Team



- 50% Physics
- 35% Mathematics
- 15% Other STEM subjects & Business
- 50% PhD / doctorate

8

Office locations

30+

Nationalities

100 %

climate neutral

Our industry expertise



Banking & Capital Markets



Insurance & Asset Management



Chemicals, Energy & Manufacturing



Pharma & Healthcare



Mobility & Transportation



Public Sector

Together with our clients, we drive strategies, develop business designs and implement tailored IT solutions. A collaborative and trustworthy relationship is important to us.

d-fine GmbH
An der Hauptwache 7
D-60313 Frankfurt/Main
Germany

Frankfurt

Berlin

Dusseldorf

Hamburg

London

Milan

Munich

Stockholm

Utrecht

Vienna

Zurich

d-fine

analytical. quantitative. tech.