

# XL Platform

Introducing XL

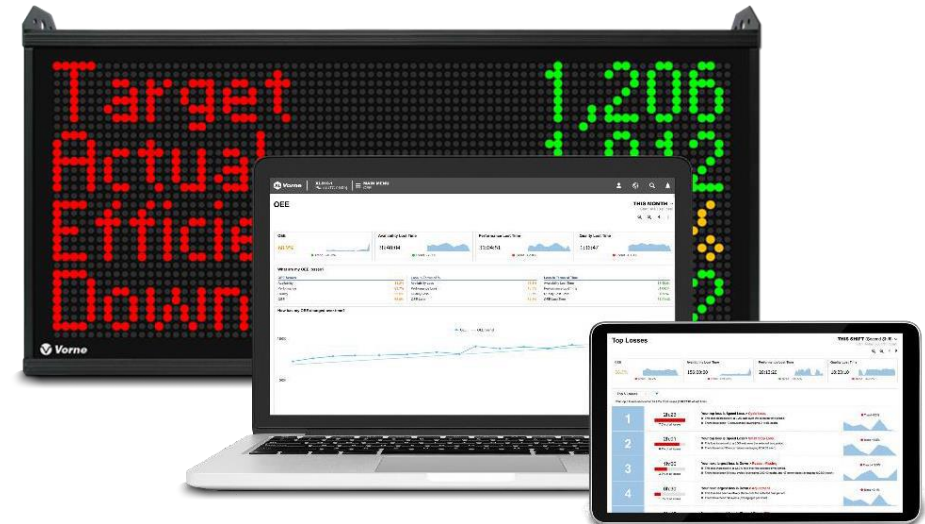
Installs in hours. Configures in minutes.  
Impacts immediately.



# What is XL?

An IoT device with fully-integrated production monitoring and reporting.

- One device that includes scoreboard, I/O, historian, and reporting
- A “bolt-on” solution for monitoring any manufacturing process
- Centralised reporting behind your firewall with no need for servers
- A single source of accurate and precise information on losses
- Simple to install, easy to integrate
- Eliminates manual data collection
- A complete solution at a fixed and transparent cost

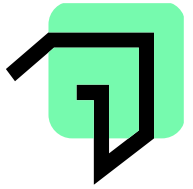




# Why XL?

Installed in 25,000+ applications across all industries.

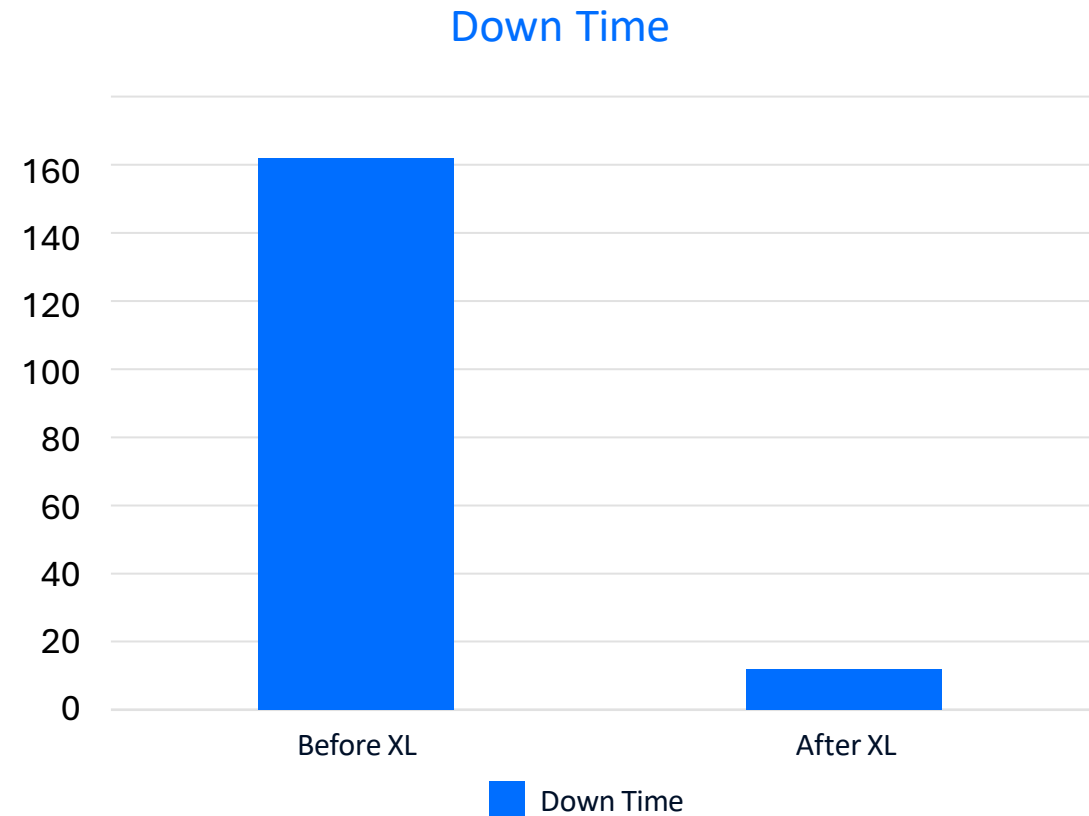
- Applies easily to all types of manufacturing processes
- Provides a uniform way to look at manufacturing performance across all your work centres
- Over 100 actionable metrics and dimensions
- Scalable – start with one work centre and expand at your pace
- Unlimited users with no license, maintenance, or other recurring fees
- Fast and easy – avoids costly and complex projects

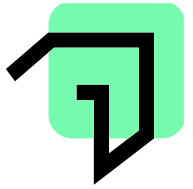


# Downtime Slashed by 94%

“The XL displays definitely generate a competitive interest on the plant floor. Until we put the display up, it was not uncommon to see 160 minutes of shift downtime. Now that the operators can see down time in real time, it is down just 10 or 12 minutes per shift.”

- S. T. | Plant Engineer International Glass Products Manufacturer



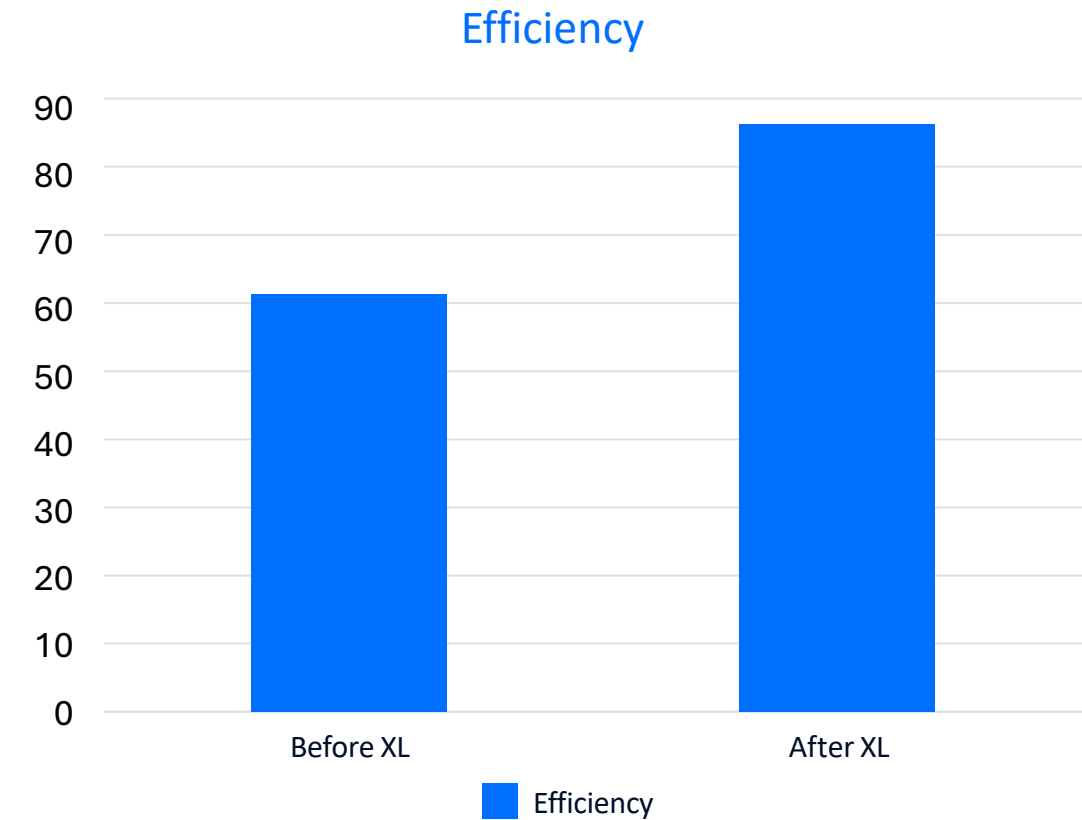


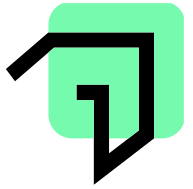
# Efficiency Increased by 29%

“We saw an immediate 29% improvement in production efficiencies just by adding the displays!

The project has been so successful that we’ve now outfitted two complete plants with XL810s and are working on another.”

- R. H. | Engineer Large Print Advertising Company



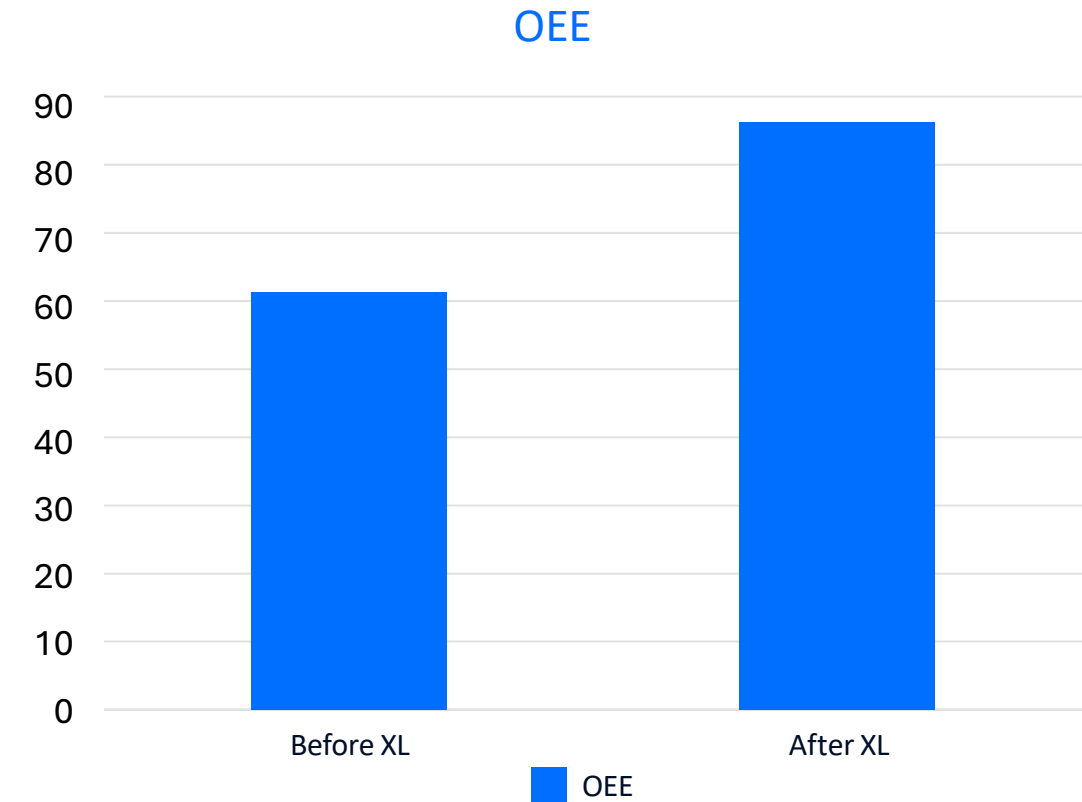


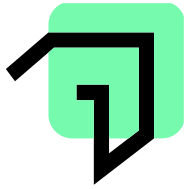
# Efficiency Increased by 29%

“So far this year, we have been able to achieve a 22% improvement in OEE, and XL has been an integral part of our improvement process.

By knowing the status of all our lines in real-time, we can address problems in real time.”

- M. H. | Plant Manager Personal Care and Household Products

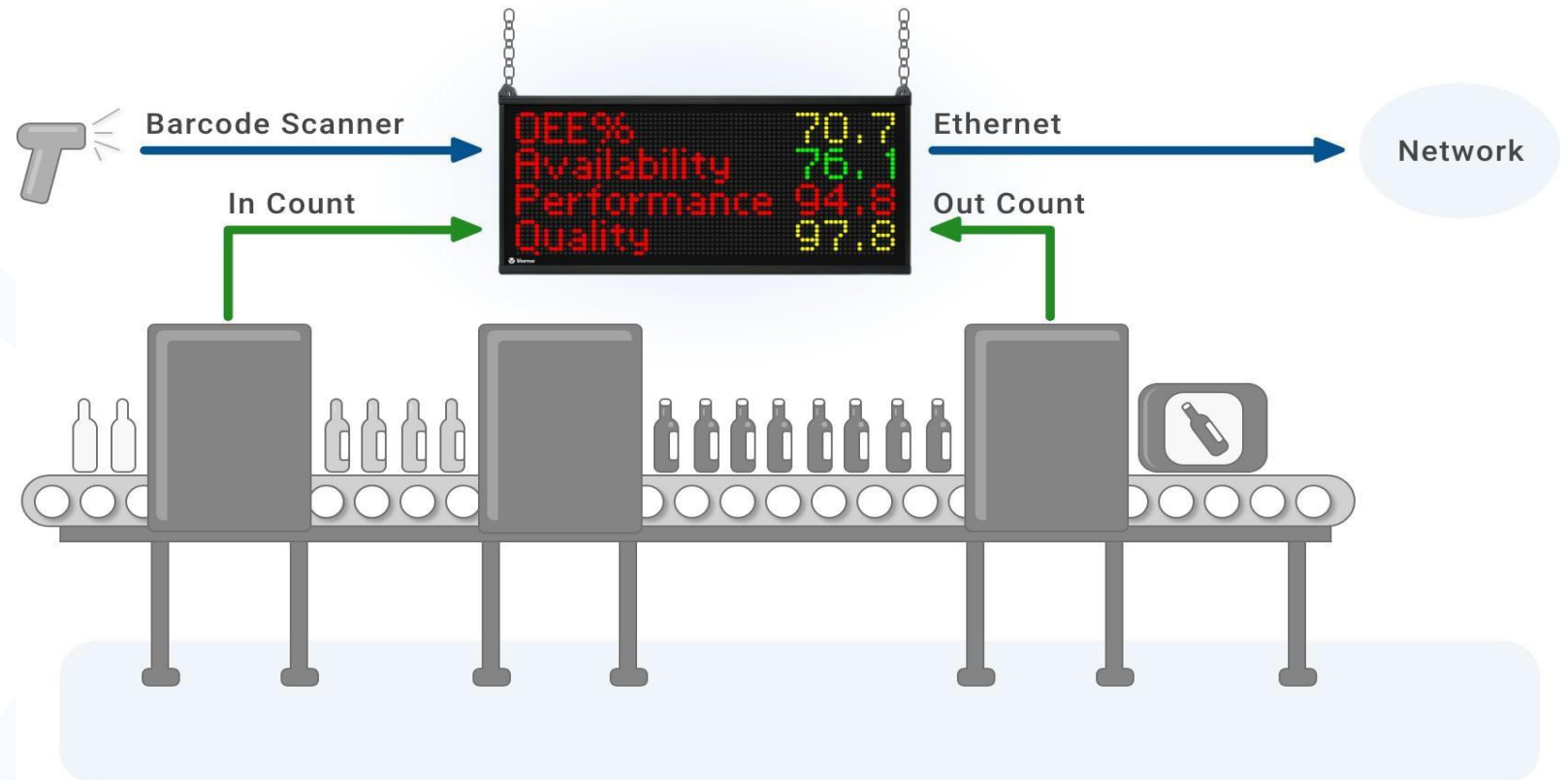




# Installation Friendly

Easily installed by your maintenance team.

- One or two sensors
- Barcode scanner
- Ethernet drop

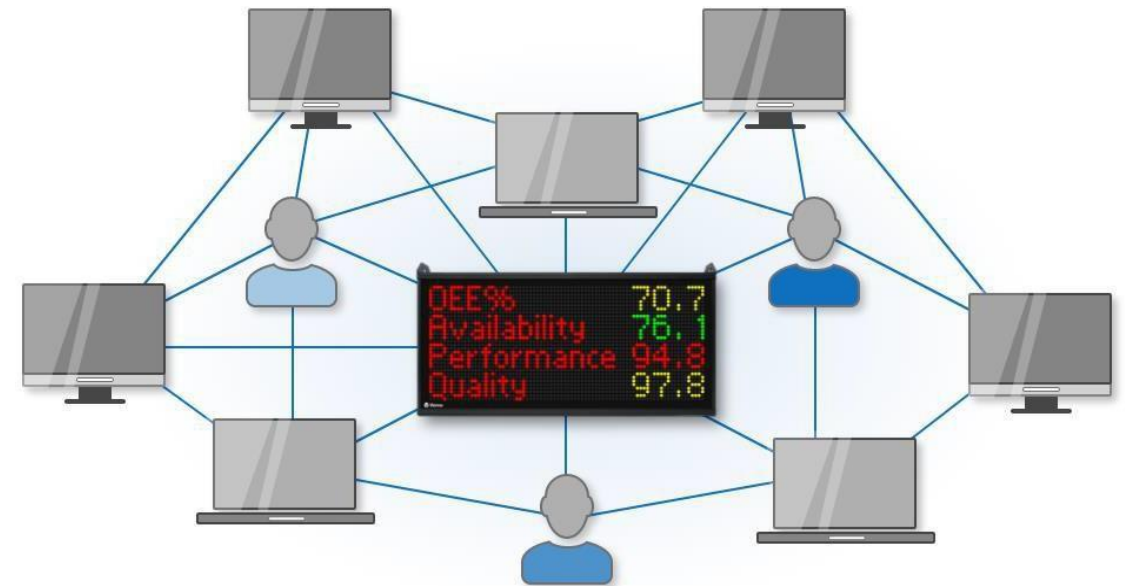




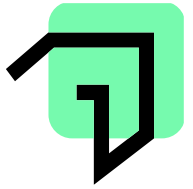
# Installation Friendly

Easily installed by your maintenance team.

- No servers or software to install
- Operates on your LAN and behind your firewall
- Instant browser-based reporting
- Minimal impact to network traffic
- Off-the-shelf ERP/MES integration tools from our partners







# User Friendly

The most important XL feature is Easy.  
We call it XL Easy.

- Easy to install – one or two sensors, barcode scanner, Ethernet
- Easy to configure – point-and-click
- Easy to use – consistent and intuitive reporting platform
- Easy to leverage – immediate insights into all types of losses
- Easy to expand – add XL devices and data rolls up across your plant

## Preview

Target 8,531  
Actual 5,565  
Efficiency 65.2%  
Down 1:17:18

## Fields

The scoreboard can be configured with one or two groups of fields. Each group displays four fields of your choice. When multiple groups are configured, they automatically rotate on the scoreboard.

### Rotate Fields ?

No (Recommended) ▼

### First Group

Field ?	Format ?	Interval ?	Label ?
Target Count ▼		Shift ▼	Target
Good Count ▼		Shift ▼	Actual
Efficiency ▼	1 Decimal Place ▼	Shift ▼	Efficiency
Down Time ▼		Shift ▼	Down

Save

Cancel



# Any Machine

## One platform for every process.

- Easily applies to all your plants and all your processes
- Provides a consistent view of all your work centres
- One framework for seeing all loss information
- Scales from work centre to enterprise

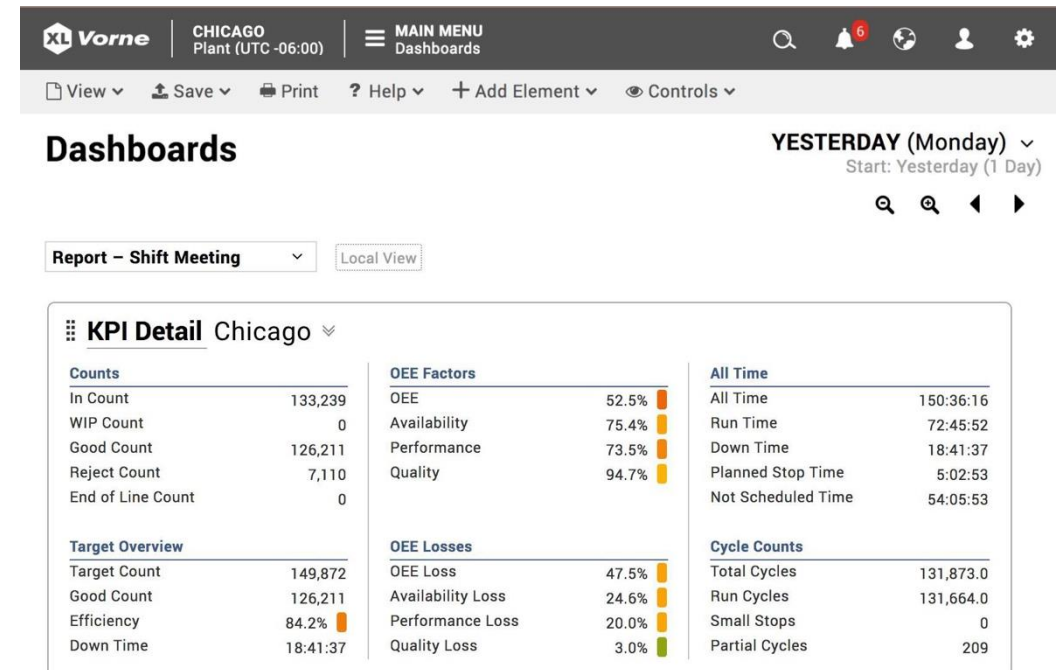


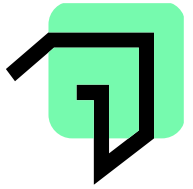


# Any Metric

Instant access to a wealth of information.

- 100+ metrics and dimensions
- Metrics measure a quantitative characteristic of production
- Counts, Rates, Cycles, Quality
- OEE, Six Big Losses, TEEP
- Labor, Targets, Production Times
- Dimensions capture a qualitative characteristic of production
- Shift, Team, Part, Job
- Production State, Impact, Production Phase, Reject Reason
- Shift Hour, Day, Week, Month, Quarter, Year





# Track Downtime

Automated. Accurate. Actionable.

- Replaces highly inaccurate manual log sheets
- Automatic, precise, run/down detector
- Operators are prompted to scan reasons for
- out-of-the-box analytics
- Add comments to key events to capture additional insights
- Companies are often shocked when they
- discover their true down time
- Factors into OEE Availability (together with changeovers)



Scoreboard for Operators



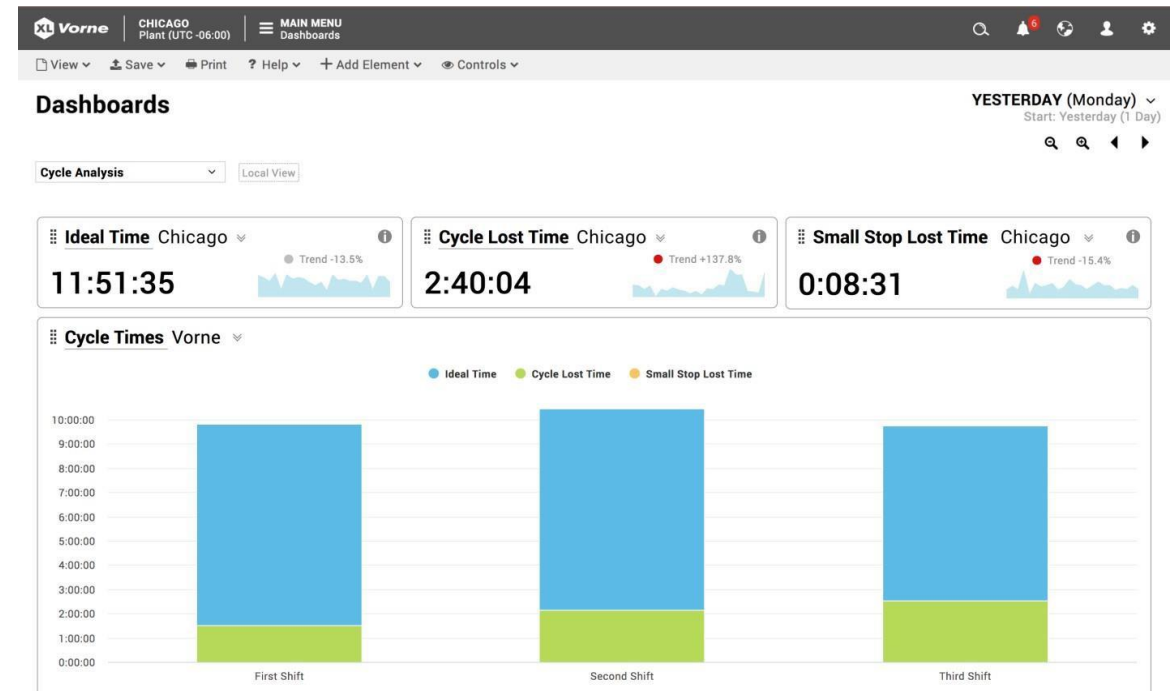
Reports for your Entire Team



# Analyse Cycles

## Precise measurement of run cycles and small stops.

- Automatically measures and categorises every cycle
- Deep analytics with 18 built-in cycle metrics
- Validate run cycles to ideal cycle time for accurate OEE scores
- Small stops are differentiated as they often have a different root cause
- Equipment cycles tracked for asset-care programs
- Factors into OEE Performance

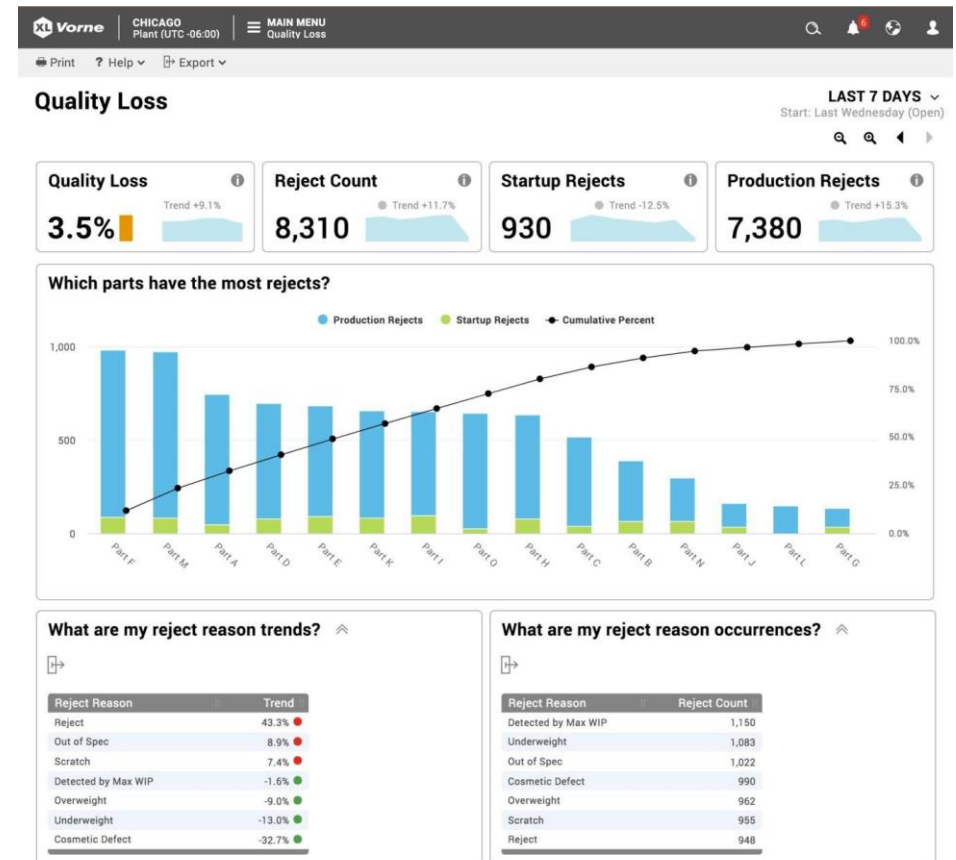


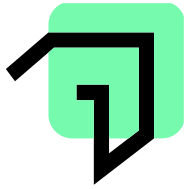


# Explore Quality

## Quality metrics and reject reasons as a dimension.

- Automatically track start-up and production rejects
- Identify emerging issues with trend analytics
- Scan reject reasons for additional depth of reporting
- Use dimensional analysis to better understand underlying causes
- Factors into OEE Quality





# Visual Factory

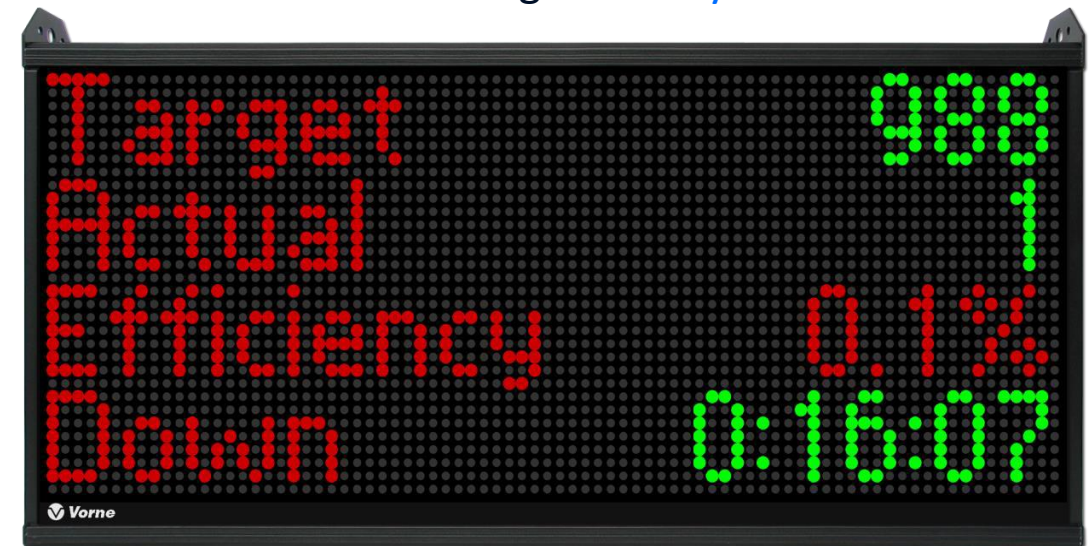
Empower your plant floor team.

- Immediately improve productivity with real-time targets for operators
- Choose from 100+ KPIs with point- and-click scoreboard configuration
- TAED (Target, Actual, Efficiency, Down) often used so operators can “win the shift”
- Scoreboard automatically changes context (e.g., down, changeovers, breaks)

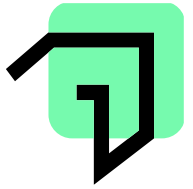
Production State Screens



Running Normally



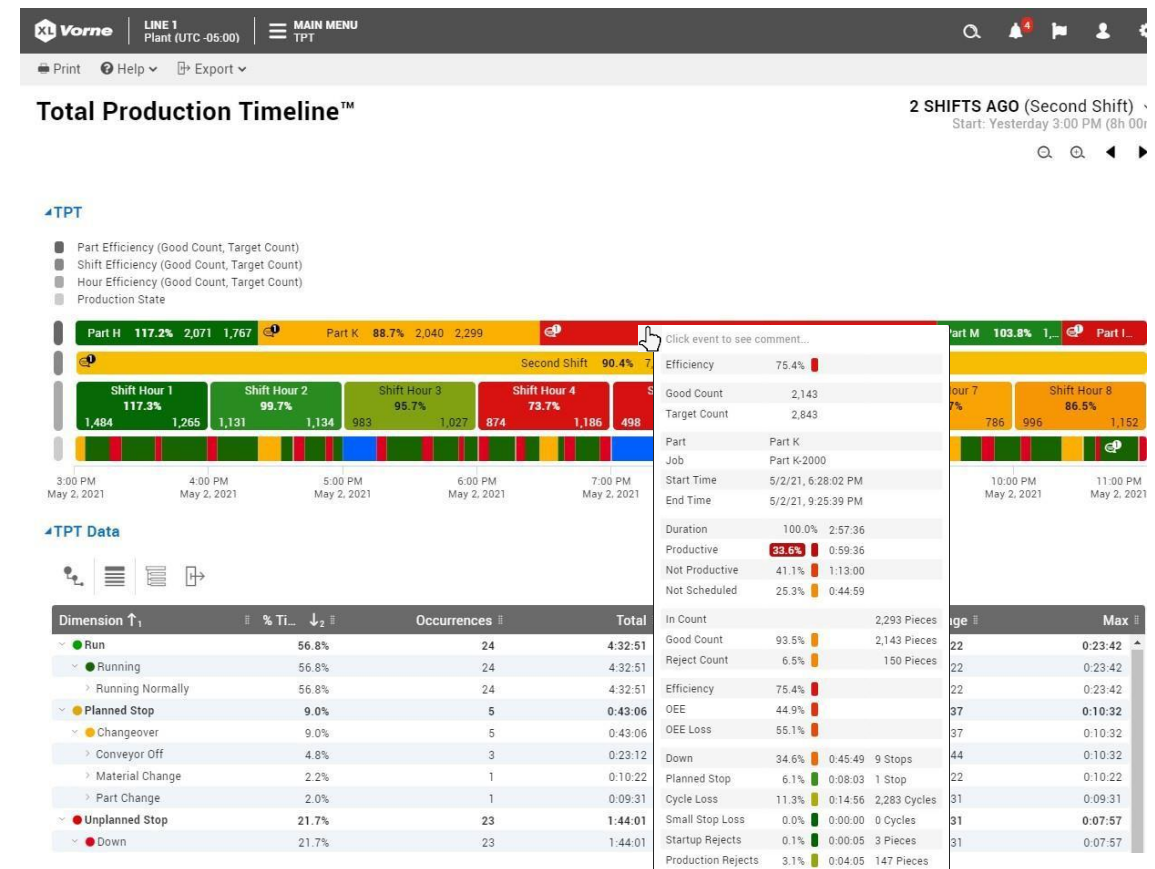




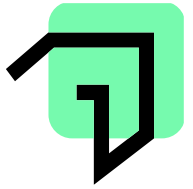
# Visualise Production

A real-time view of manufacturing.

- See data from anywhere on your network
- Visualise production in real-time during the shift
- Colour-coded events expose issues, identify patterns, and encourage immediate action
- Instantly see downtime, changeovers, production, and breaks
- Tooltips provide complete loss reports for every event



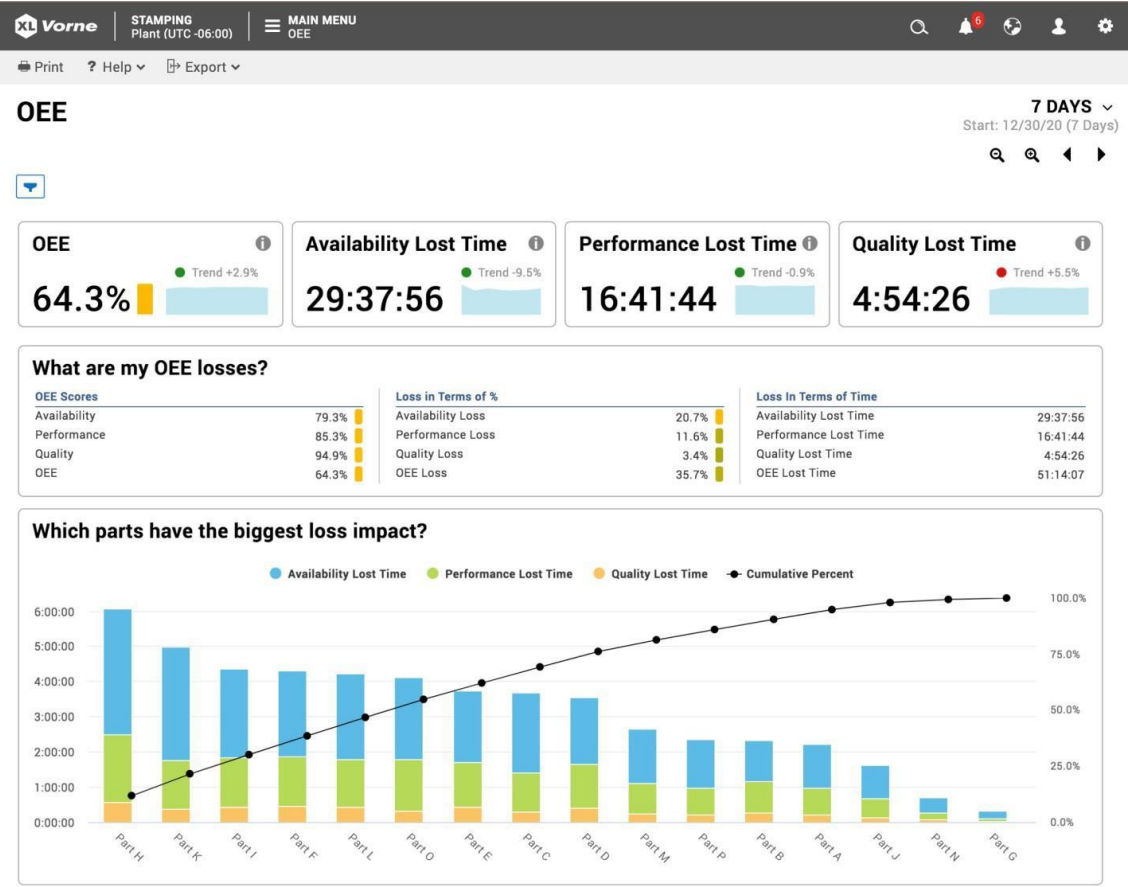


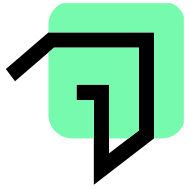


# Instant OEE

The gold standard for manufacturing productivity.

- OEE delivered by the publishers of oee.com
- Six Big Loss reports delivered by the publishers of leanproduction.com
- TEEP reports to expose your “hidden factory”

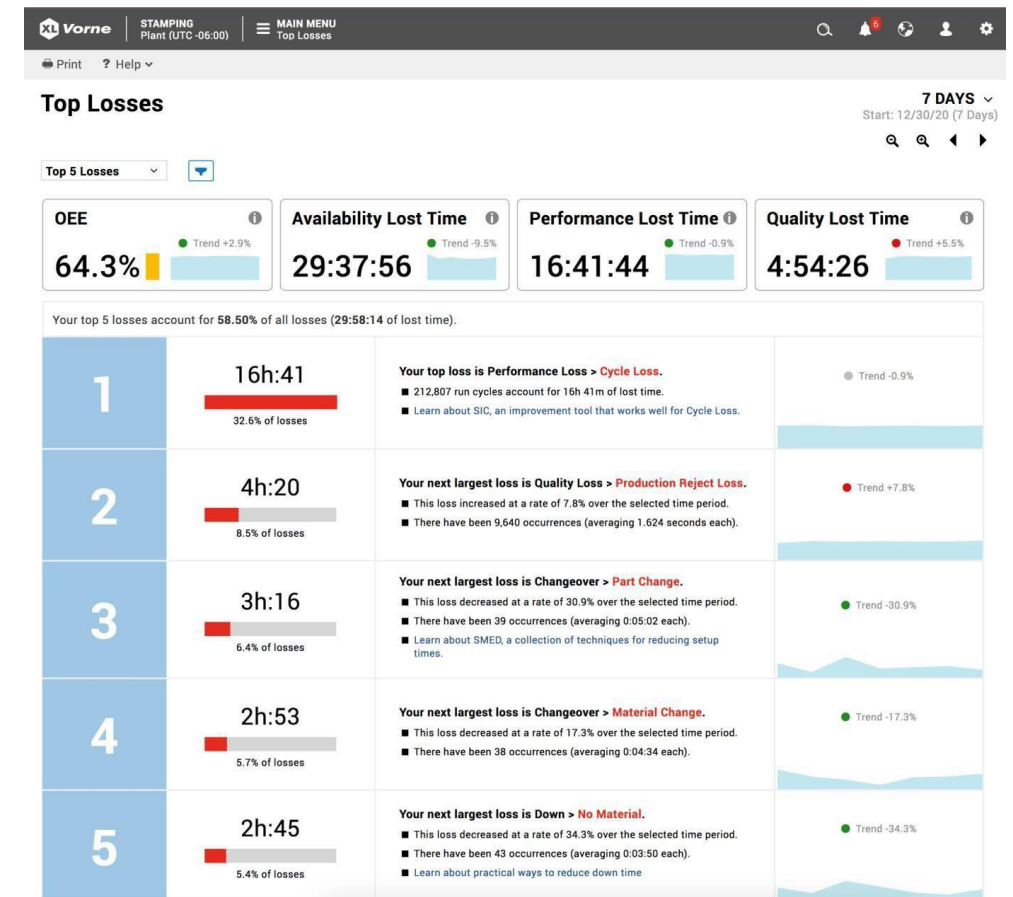




# Top Losses

A built- in continuous improvement roadmap.

- Losses prioritised and ranked by their time impact
- Sparklines show trends and patterns
- Additional details and context for each loss
- Provides instant clarity on what to fix next
- Spend more time improving and less time in meetings

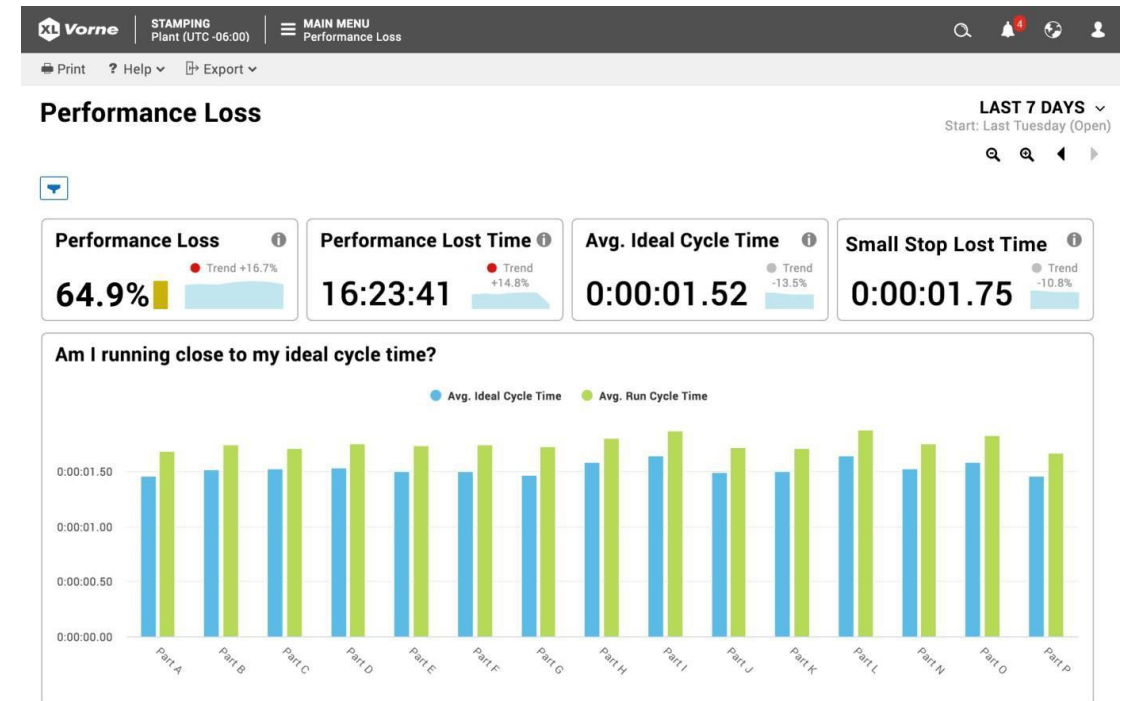




# Take a Deep Dive

## Instant answers to important questions.

- Simple – Q&A format
- Natural – for example: “Am I running close to my ideal cycle time?”
- Powerful – based on best practices from thousands of deployments
- Productivity: OEE, Six Big Losses, TEEP
- Losses: Down Time, Changeover, Performance Loss, Quality Loss
- Labor: Teams and Labor

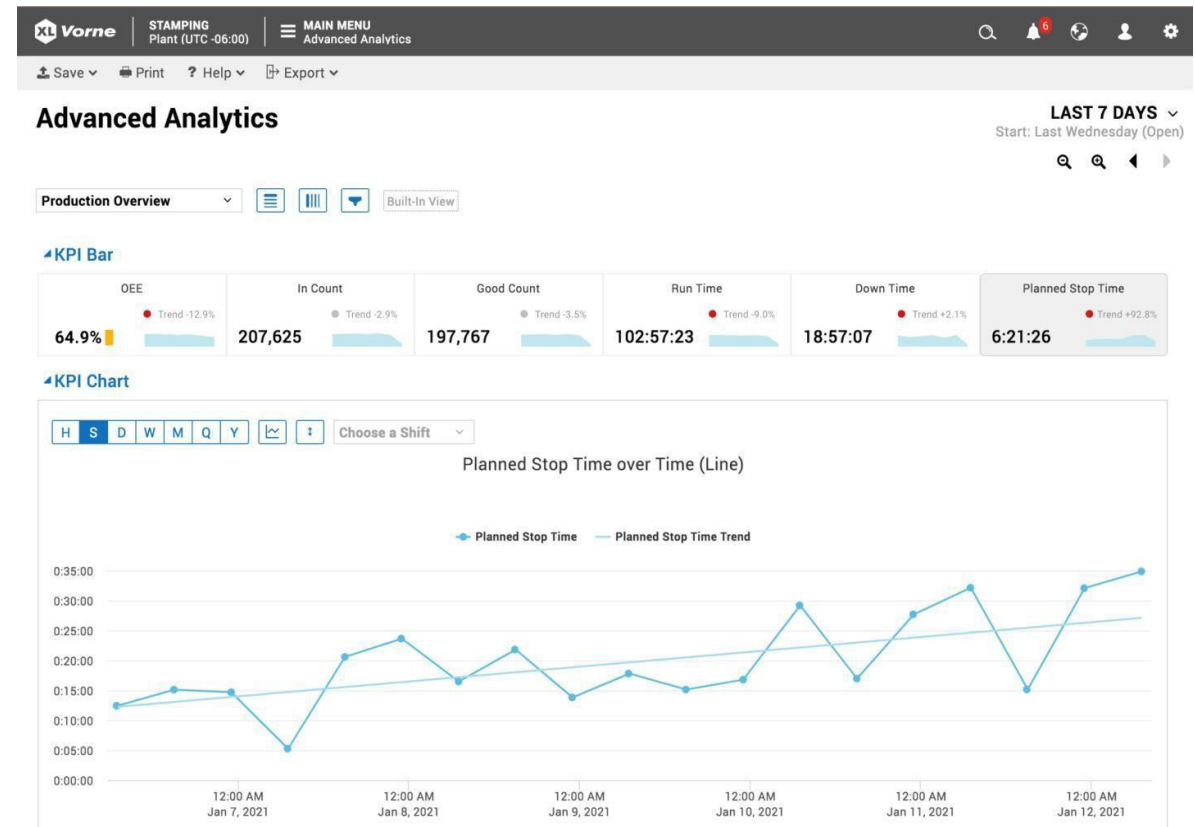




# Advanced Analytics

Explore. Compare. Trend. Improve.

- Explore dimensions and metrics with an intuitive drag-and-drop interface
- Compare across dimensions to discover connections and causality
- Trend metrics to see which KPIs are improving and which are getting worse
- Improve and validate the impact of your actions with personalised data views





# All Production

Your entire enterprise at a glance.

- A complete hierarchical view of sites, areas, and work centres
- Automatic rollup of data across all levels
- Colour calls attention to where action is needed
- Multiple built-in views or configure your own
- All from the XL device – no servers or software to install, no recurring fees

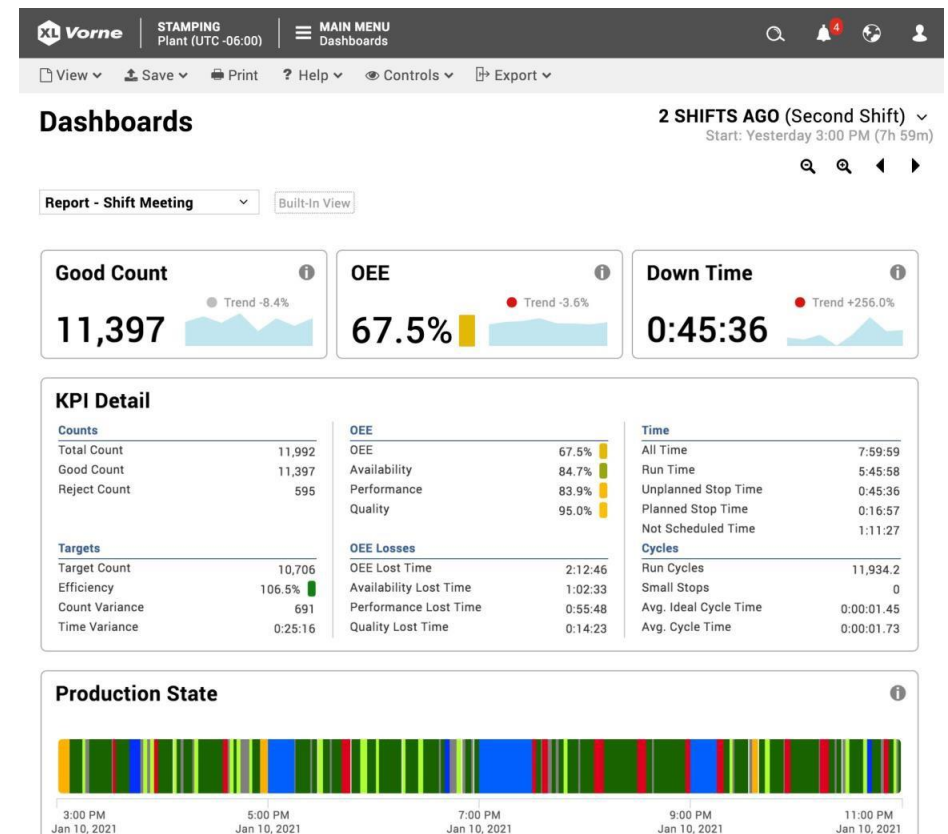
Asset Name ↑	Production State	Target Count	Good Count	Efficiency	Down Time
▼ Vorne Industries	Multiple (3)	42,423	36,750	86.6%	6:09:17
▼ Chicago	Multiple (2)	11,581	10,084	87.1%	2:11:49
▼ Packaging	Multiple (2)	11,581	10,084	87.1%	2:11:49
⚙ Packaging #1	Down	5,970	4,591	76.9%	1:01:13
⚙ Packaging #2	Running	5,611	5,493	97.9%	1:10:35
▼ Itasca	Multiple (2)	12,420	11,664	93.9%	1:29:27
▼ Stamping	Multiple (2)	12,420	11,664	93.9%	1:29:27
⚙ Stamping #1	Down	6,324	6,328	100.1%	1:01:14
⚙ Stamping #2	Changeover	6,096	5,336	87.5%	0:28:13
▼ Peoria	Running	12,326	9,666	78.4%	1:59:47
▼ Filling	Running	12,326	9,666	78.4%	1:59:47
⚙ Filling #1	Running	6,471	5,190	80.2%	0:57:40
⚙ Filling #2	Running	5,855	4,476	76.4%	1:02:07
▼ Urbana	Changeover	6,096	5,336	87.5%	0:28:13
▼ Casting	Changeover	6,096	5,336	87.5%	0:28:13
⚙ Casting #1	Changeover	6,096	5,336	87.5%	0:28:13



# Live Dashboards

Point- and- click to create your own reports.

- Personalise each view to visualise whatever is most important to your team
- Incorporate table, chart, chronogram, KPI, and KPI group widgets
- Instantly export any table to Excel
- Exactly what you want to see, exactly how you want to see it

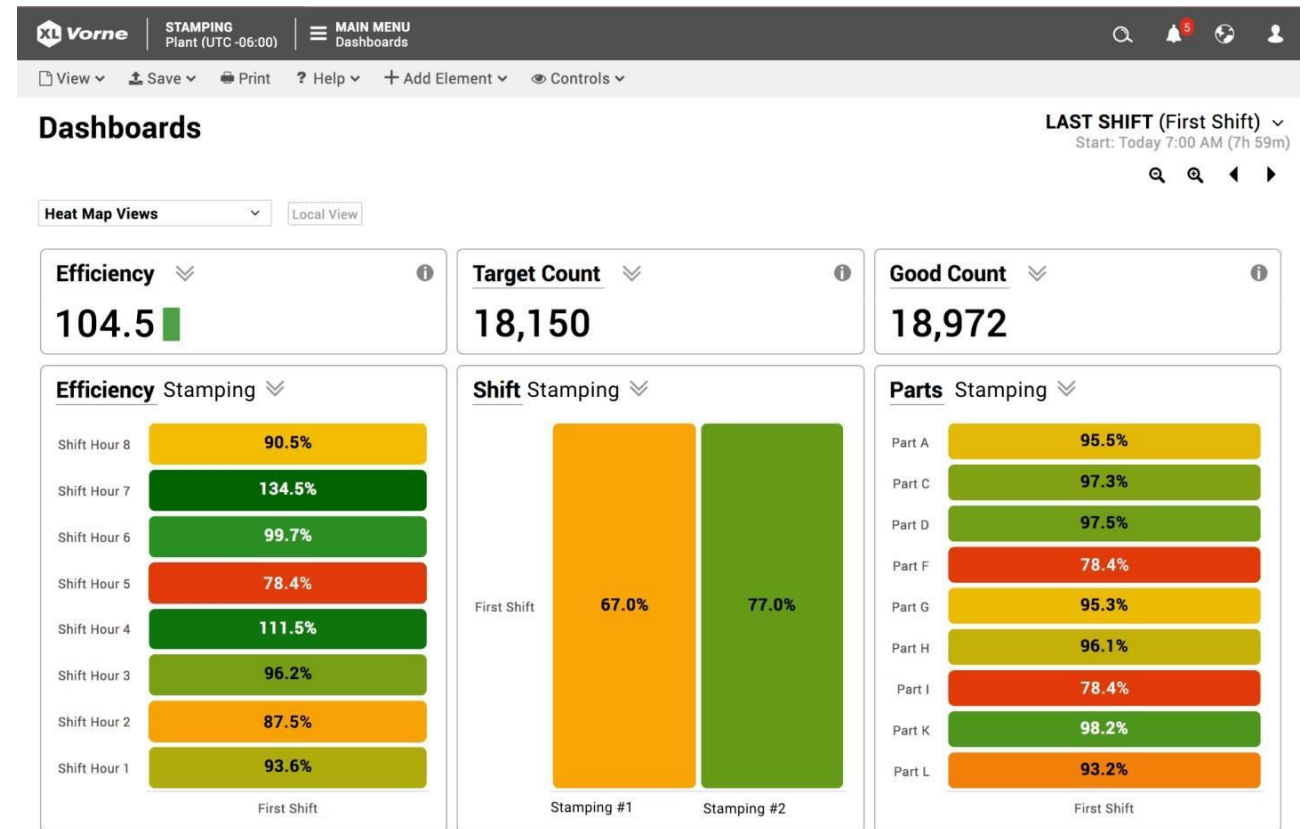




# Heat Maps

Problems practically leap from the page.

- Perfect for quickly scanning to spot problem areas
- Available for charts, tables, chronograms
- Define levels for each alert metric: Good, Caution, Warning, Critical
- Continuous colour gradient for highly expressive pages





# Add Context with Comments

Add freeform comments to any event.

- Provide additional context for major losses
- Post comments and replies
- Easily search across all comments
- Create personalised views to validate policy-based audits
- For example: Down > 15 minutes, Part OEE < 65%

The screenshot displays the Vorne application interface for viewing comments. The top navigation bar includes the Vorne logo, the current plant 'STAMPING Plant (UTC -06:00)', and a 'MAIN MENU' button. Below this, there are 'Save' and 'Print' options. The main heading is 'View Comments', and the right side shows 'THIS SHIFT (First Shift)' with a dropdown arrow and 'Start: Today 7:00 AM (Open)'. A search bar and navigation icons are also present. The comments are filtered by 'All Comments' and shown in a 'Built-In View'. The first comment is titled 'No Operator' and dated 'Jan 11 2021, 7:00 AM (1m 43s)'. It contains a message from a Manager about reassigning an operator. The second comment is titled 'Cartoner down' and dated 'Jan 11 2021, 7:05 AM (1m 42s)'. It contains two messages: one from an Operator about a cap chute issue and one from a Manager about a changeover SOP. The third comment is titled 'Material Change' and dated 'Jan 11 2021, 8:03 AM (7m 31s)'. It contains a message from an Operator about waiting for an FLT operator. Each comment entry includes an 'Add comment' link, the number of comments, and 'Edit' and 'Delete' buttons.

**View Comments** THIS SHIFT (First Shift) Start: Today 7:00 AM (Open)

All Comments Built-In View

Stamping (Itasca, Stamping)

**No Operator** Jan 11 2021, 7:00 AM (1m 43s) Add comment 1 comments

Manager - Reassigned the operator to another line to meet a scheduling requirement.  
Jan 11 2021, 1:04 PM Edit Delete

Reply to comment...

Add comment...

**Cartoner down** Jan 11 2021, 7:05 AM (1m 42s) Add comment 2 comments

Operator - Caps repeatedly getting stuck in the cap chute. Removed, adjusted the guide width, lubricated star wheel.  
Jan 11 2021, 1:03 PM Edit Delete

Manager - Please check that guide width is included in the changeover SOP.  
Jan 11 2021, 1:04 PM Edit Delete

Reply to comment...

Add comment...

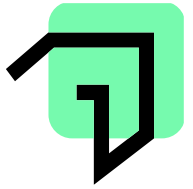
**Material Change** Jan 11 2021, 8:03 AM (7m 31s) Add comment 1 comments

Operator - Waiting for FLT operator to bring a new pallet of card stock from the stores.  
Jan 11 2021, 1:05 PM Edit Delete

Reply to comment...

Add comment...

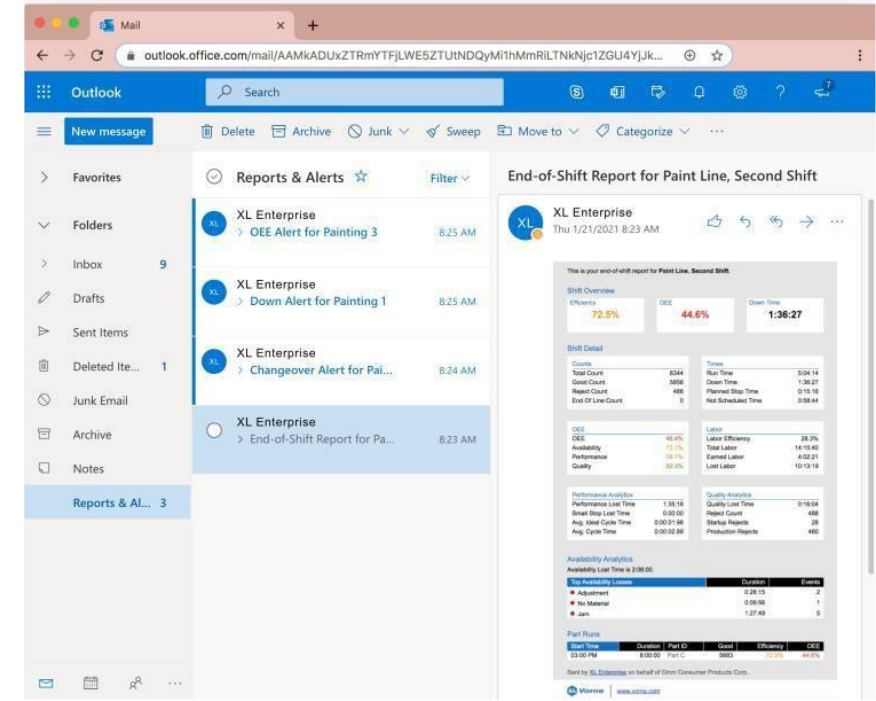
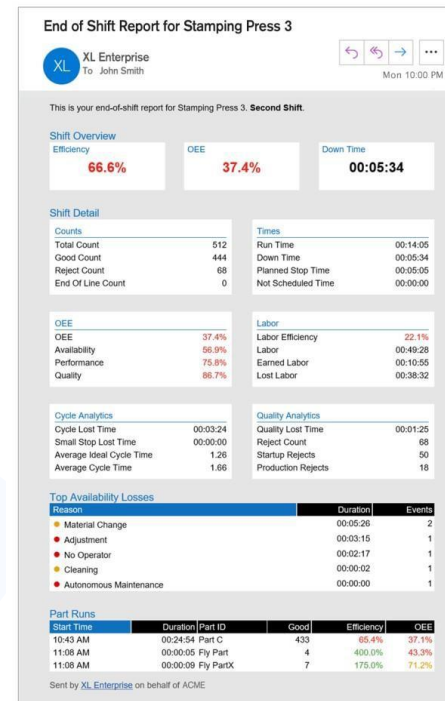


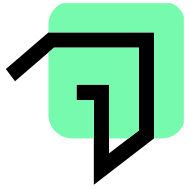


# Email Alerts and Reports

Free cloud services for the XL platform.

- Instant notification for anything that needs your attention
- Automatically escalate alerts to supervisors and managers
- End-of-shift reports immediately delivered directly to your inbox



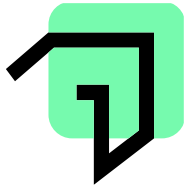


# Unbeatable Value

A standardised off- the- shelf product that easily adapts to you.

- All features included for one low-cost
- Match XL to your process with point-and- click configuration
- No custom software
- Free cloud services including email alerts
- Built on manufacturing best practices and our experience from 25,000+ installs
- Third-party standard products for easy integration





# A Platform for You

A great investment that grows with you.

- Free software updates
- Technical support 3-year warranty
- Deep ecosystem of international, developer, and consulting partners
- Improvement best practices are integrated into the platform





# Global Customers

— From multi-national enterprises to single site operations, the best in the food packaging industry rely on our solutions to improve the operational performance.





# Why choose XL?

XL is your fastest path to improving manufacturing productivity.

## XL is easy

- Installs in hours
- Incredibly easy to use
- No additional staff needed
- Technical support
- Free software updates
- Proven global platform

## XL is powerful

- Complete visibility of manufacturing lines
- Integrated scoreboard and reports
- 100+ metrics and dimensions
- Rolls up data across plants
- Configurable dashboards
- Built-in, shared, personal views

## XL is affordable

- One-time cost
- No fees or licenses
- No contracts
- No limits on users
- Free cloud services

# Thank you.