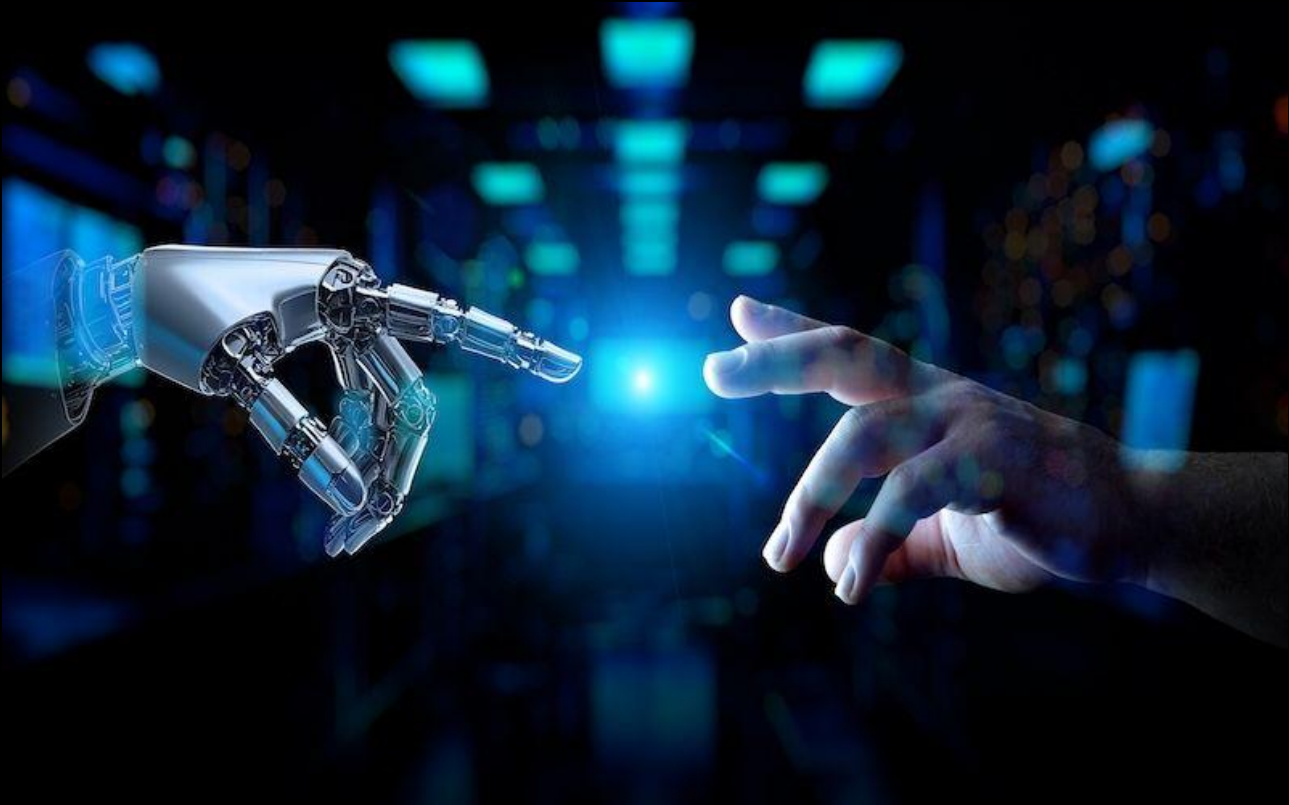


# “AI Visibility” - Full Cycle Consulting



“If you don’t change the direction in which you are going, you might end up where you are headed” - Chinese proverb.

Artificial intelligence (AI) is transforming the competitive landscape of modern business. Companies are reimagining how they create, capture, and deliver value, driving remarkable growth in the process.

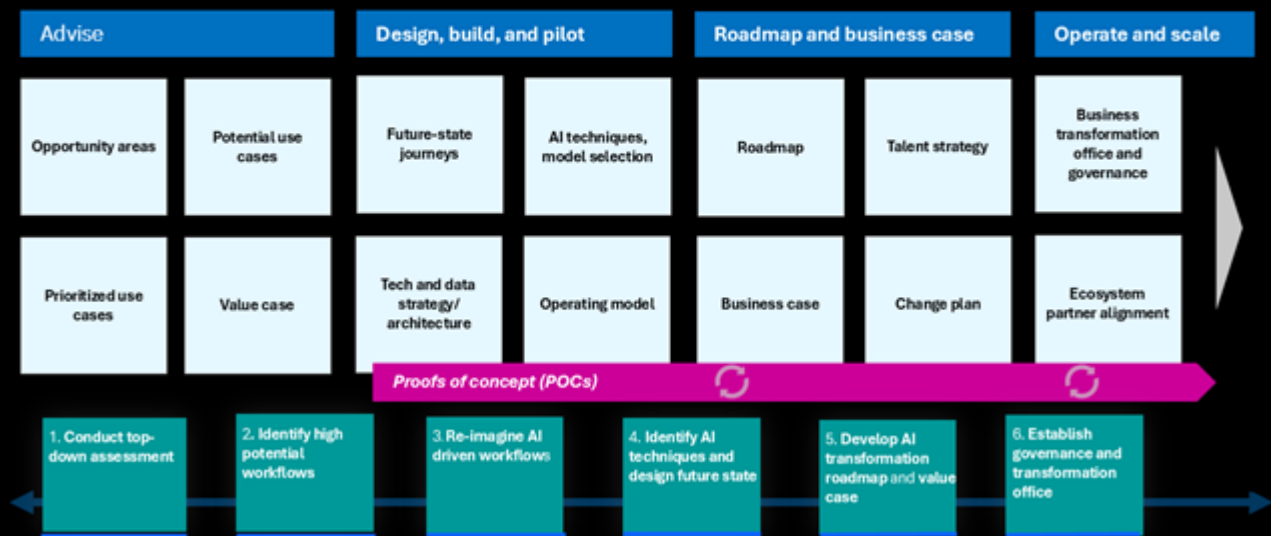
## **AI & Data is re-defining how businesses DO BUSINESS!**

Emanations offer an in-depth exploration of the technology considerations and growth opportunities associated with leveraging AI & advanced analytics. Through our AI Visibility framework, we assess the impact of AI on your industry and strategies for its effective integration into your business, including:

- Crafting and implementing a comprehensive AI strategy.
- Ensuring an ethical AI approach and mitigating associated risks
- Building the right infrastructure to gain a competitive edge
- Redesigning organizational systems, processes, and roles for an AI-driven future
- Developing the necessary skills, capabilities, and culture to support an AI-first operating model

We help businesses make a significant step in their AI & future preparedness through scenario thinking and inter-active analysis of business now and its appropriateness for the future. The analysis provides a deep yet cost effective insight into what are the most likely business challenges, risks, and priorities. The independence and expertise of Emanations added to the business's own knowledge, provides a 'rich' understanding of the opportunities, choices, and approaches to change that can be adopted

## AI Visibility full Cycle Consulting Services



Emanations is confident that any organisation making use of this AI future proofing analysis will be more successful and confident of the future. The depth of the analysis is tailored to meet the specific needs of each Leader. Emanations AI Visibility Insight involves:

- Identifying an appropriate sampling key stakeholders (in consultation with the leadership)
- vital business categories & impact of AI
- paramount questions per category
- A robust discussion per question resulting in a unique calibrated assessment of the current business approach and the risk of not changing in 3 years time
- A methodical understanding of the nature of what needs to be changed
- Emanations review of the results to identify smart ways to achieve improvement.
- A well informed and facilitated strategic workshop to gain a common understanding of the future proofing analysis and to agree the best way forward for the company.

The company will be starting from a robust baseline of understanding of what needs to be done. It will be more confident of success in the rapidly changing environment we live in.

Ready to explore the future.

*Drop us a line*

✉ [shabbir@emanations.net](mailto:shabbir@emanations.net)

🌐 [www.emanations.net](http://www.emanations.net)

📍 Based in Rochester | IBM Silver Partner in AI & Data Consulting

