

CNC and conventional machining platforms

THE PROBLEM - Exposure to ANY LEVEL of coolant mist is harmful to health

Traditional **MANUFACTURING PROCESSES POLLUTE** the working environment with e.g., Noise, Volatile Organic Compounds and Particulate Matter and these **AFFECT OUR HEALTH**.

Having a better understanding of the **DAILY RISKS** we are exposed to at work and being able to act on that insight reduces uncertainty and minimises the chance of **ILLNESS DEVELOPING**, often in later life. Both employers and employees have a **LEGAL AND MORAL** responsibility for health and safety.

UNSEEN RISK is from Particulate Matter (PM). PM are microscopic particles of solid or liquid matter suspended in the air. **AIRBORNE CONTAMINANTS** in manufacturing environments include mist, dust, fumes, metals, bacteria, mould, volatile organic compounds etc. It is known viruses can attach themselves to Particulate Matter as a mode of transmission.

How effective are recirculating type mist extractors.

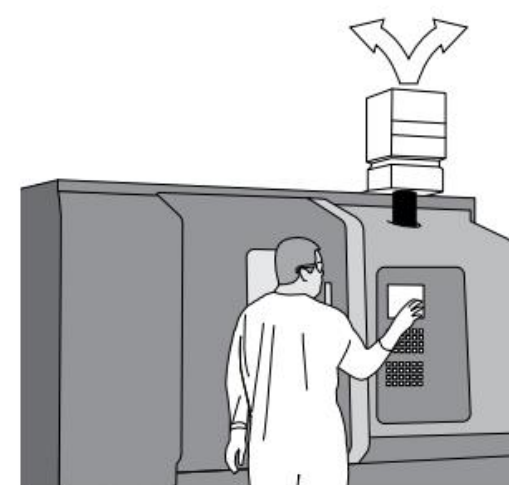
Installing a suitably specified Local Exhaust Ventilation (LEV) system and correctly maintaining helps reduce exposure to 'larger', irritating particles ($\sim >10\mu\text{m}$) of metalworking fluid mist but may **NOT ELIMINATE RISK** from smaller respirable particles ($<2.5\mu\text{m}$)

Particle sizes $<2.5\mu\text{m}$ are **RESPIRABLE** and some of these toxins may enter the bloodstream and be transported around the body, lodging in the lungs, heart, brain, and other organs leading to **OCCUPATIONAL LUNG DISEASE, COPD, CANCER** and other **ILLNESSES**.

Some LEV's are less efficient at removing 'water emulsion' mist than 'neat oil' mist and suppliers often state "independently tested" with "up to 99.95% efficiency"

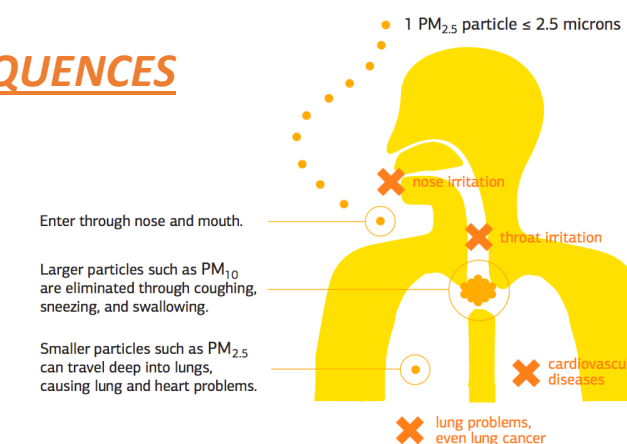
These numbers **CAN BE MISLEADING** as Fractional Efficiency Data (from independent testing) is not readily advertised showing ineffectiveness to remove respirable particles.

CNC Mist Extractor (LEV) Systems are mechanical devices, their **CAPABILITY REDUCES** over time. This is why regulatory servicing is required at least every 14 months.



CNC machine with a standalone LEV fitted

THE CONSEQUENCES

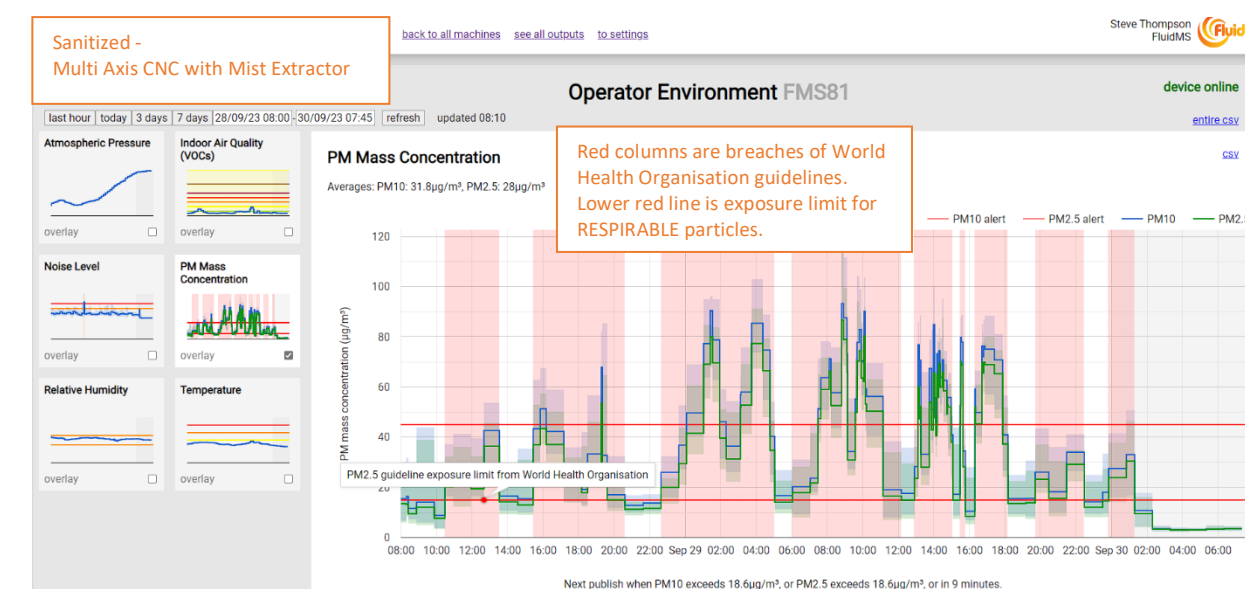


The Health & Safety Executive report incidents of **ILL HEALTH** in the workplace each year.

- Occupational Lung Disease leads to an estimated **120,000** deaths each year and **400,000** working days lost in Great Britain
- Occupational Lung Diseases typically have a long latency. Although people with existing health issues e.g., asthma may be affected sooner.
- EXPOSURE** to Metalworking Fluids is always reported as a cause of Occupational Lung Disease
- The traditional approach of occupational health monitoring **DOES NOT CAPTURE** the daily and varying pollution levels created in production processes.

The Health & Safety Executive state
"people develop these diseases because they breath...in airborne contaminants at work, often because control measures do not work well enough."

THE SOLUTION - HEXmon SENSOR 24/7 Health Exposure Monitoring, Reporting & Alert System



HEXmon Dashboard



HEXmon SENSOR, reporting platform and alert system, developed with **APPLICATION EXPERIENCE**, is a cost effective and **PROVEN SOLUTION** to trend daily exposure to harmful, respirable particles, Volatile Organic Compounds and Noise Levels.

HEXmon alleviates the problem of NOT KNOWING

HEXmon SENSOR for a safer & smarter working environment.