



FourJaw Brochure

How to get data from ANY machine in your factory in minutes,
regardless of brand, model, or age

Works on ANY machine

Machine+Link
By FourJaw





DMG MORI

LOKUMA

BUHLER

HURCO

Mazak

...and all the rest

MachineLink

Our Plug & Play IoT hardware automatically captures energy and machine utilisation data from any machine, regardless of age or type.

Benefits

- | **Works on any machine:** One platform for all your machines, no matter their brand, model or age
- | **Clip on sensors:** Sensors simply clip onto your machine's power cable
- | **Multiple connectivity options:** Internet connection either by Wi-Fi, Ethernet or 4G
- | **Minimal disruption to factory floor:** Installation takes between 10-20 minutes
- | **Hardware is included:** Your MachineLinks are included in your subscription fee



Capture downtime in seconds

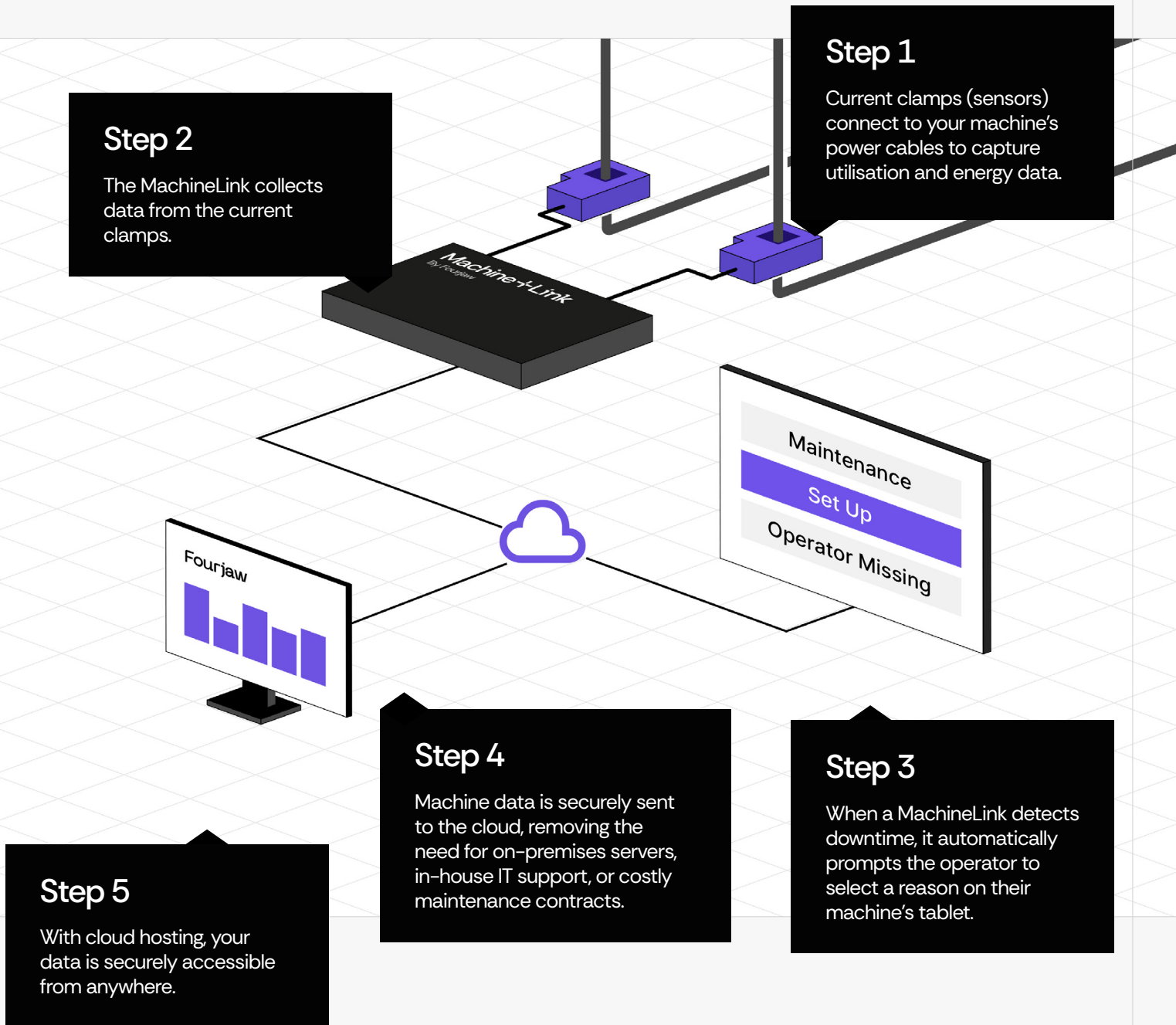
Operator Tablet

Our machine-mounted tablet that enables your operators to record downtime data in real time

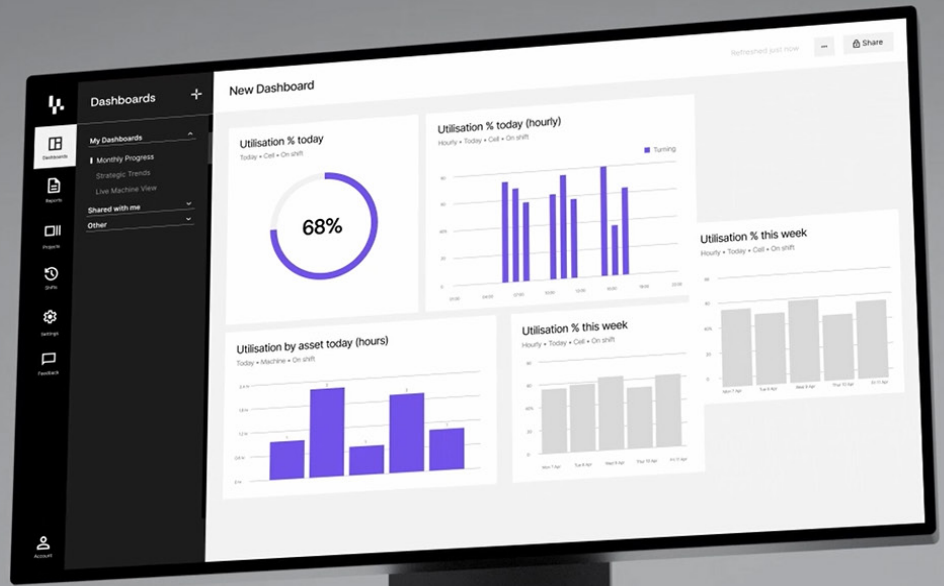
Benefits

- | **No more paper based data capture:** Quickly and easily log the reasons for machine downtime
- | **Automatic alerts:** Tablet automatically presents operators with a list of downtime reasons when downtime is detected. It takes less than 3 seconds for an operator to enter a reason.
- | **OEE/utilisation:** See OEE/Utilisation score for selected time period
- | **Faster communications:** Data is instantly pushed to the cloud for users to access in real-time
- | **Hardware is included:** Your tablets are included in your subscription fee

How FourJaw works

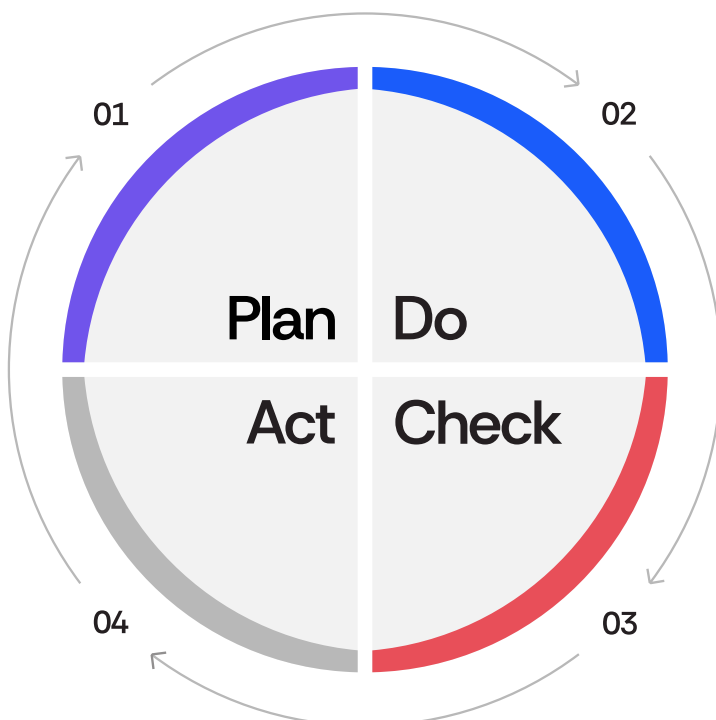


FourJaw gives all the data you need for your CI projects



CI demands reliable data, at every stage.

Running a continuous improvement initiative without accurate data is like trying to start a car without an engine. FourJaw provides that engine.



- 1. Plan:** Data is needed to pinpoint what to improve and how to do it.
- 2. Do:** Data is captured as you run the change to show what actually happened.
- 3. Check:** Data is compared with the baseline to confirm the effect.
- 4. Act:** Data sets the new baseline or sends you back to try again.

The production data captured

FourJaw gives you a clear view of how your factory runs by capturing the data that matters most.

	Production Data	Drive continuous improvement with real-time utilisation and OEE metrics.
	Energy Usage	Understand the true cost of energy within your manufacturing processes.
	Carbon Footprint	See how energy usage translates to costs and carbon footprint to motivate change.
	Automatic Alerts	Identify and resolve potential issues before they can impact your production.
	Downtime Reasons	See the top machine downtime reasons by factory, cell or machine.
	Work Booking	Keep track of jobs and analyse the efficiency that work-to lists are executed.

"To increase productivity, we needed to understand machine productivity and improvement opportunities. We required accurate, timely data from our equipment and a technology platform that was easy to roll out across the factory floor for a 'near-instant' measure of efficiency."

— Richard Baker, Continuous Improvement Manager, SPS Technologies

Fully customised production dashboards



Downtime monitoring

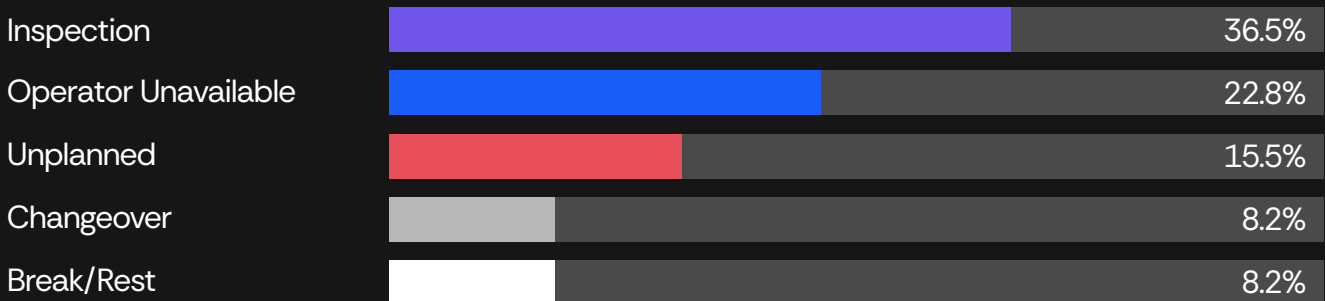
Understand the biggest causes of machine down-time on your factory floor.

20%

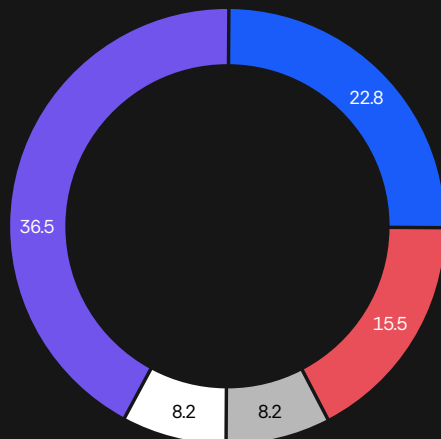


On average, our customers see a 15-20% increase in productivity.

Top 5 downtime reasons



- Inspection
- Operator Unavailable
- Unplanned
- Changeover
- Break/Rest



Utilisation monitoring

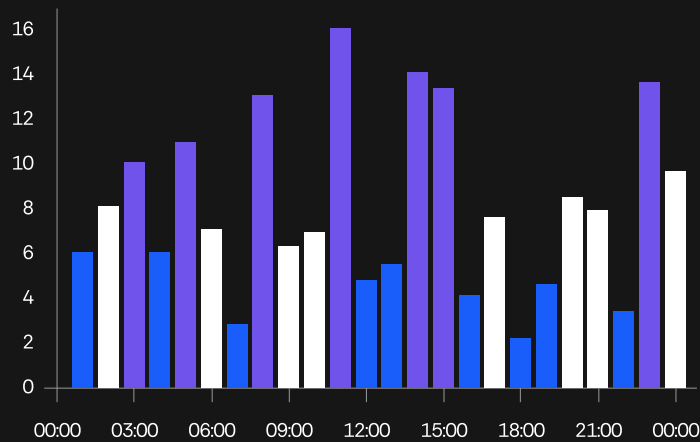
Enhance your Overall Equipment Effectiveness (OEE) by analysing and optimising availability and quality measures.

25%

Before FourJaw, many customers assume utilisation is about 65%, but real data often shows it closer to 25% percent.

OEE Availability

- █ Above Zone
- █ In Zone
- █ Below Zone



Availability by shift

- █ Nights, 75%
- █ Weekend, 65%
- █ Days, 50%
- █ Out of shift, 25%

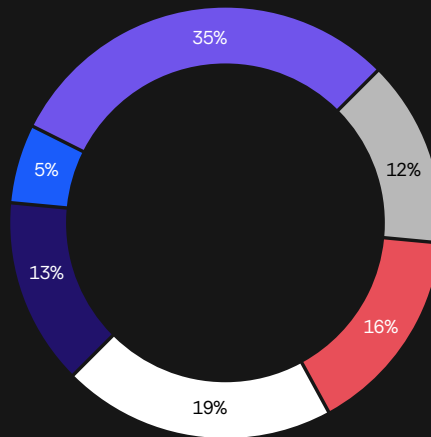


Job tracking

Manage and optimise job progress and resource allocation for improved efficiency.

Downtime breakdown

- Inspection
- Operator Unavailable
- Unplanned
- Changeover
- Break/Rest



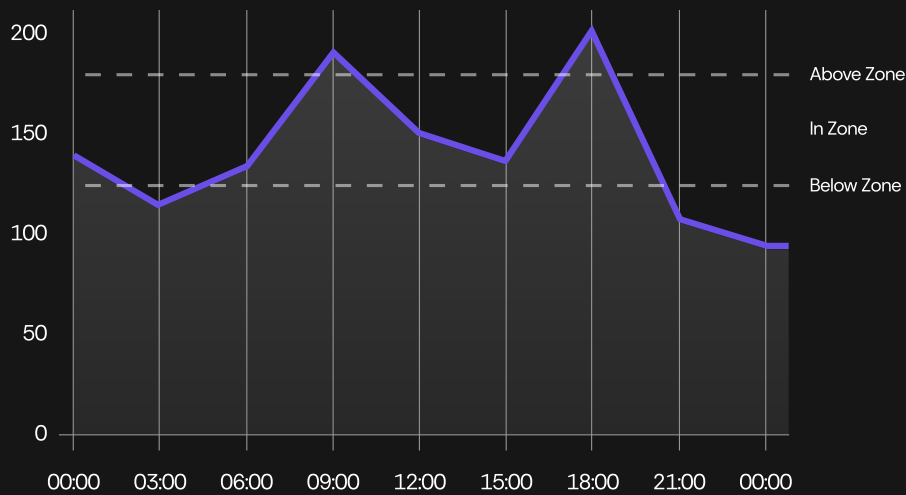
Booked hours/estimate

OP#	Machine	Start	State	Booked Hrs/ Estimate	Completion %
10	XYZ-44	07:33	Complete	4.3/5.2	74%
20	XYZ-55	07:47	Complete	3.1/6.3	44%
30	XYZ-66	07:51	Complete	5.5/7.1	88%
40	XYZ-77	08:03	Complete	6.6/9.5	79%
50	XYZ-88	08:20	Complete	3.8/4.4	97%
60	XYZ-99	08:27	Complete	6.9/18.2	45%

Energy monitoring

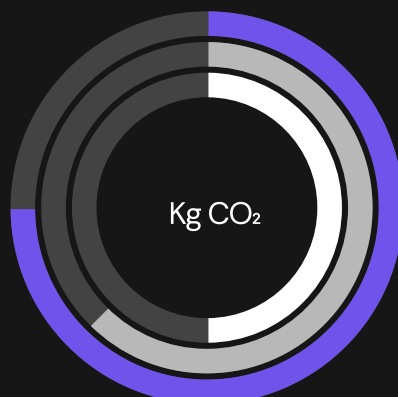
Track energy usage to reduce waste and cut costs with data-driven decisions.

Energy consumption



Carbon footprint

- Turning
- Grinding
- Milling





Case study

Birmingham-based Armac Martin manufactures luxury brass fittings and achieved strong gains after adopting FourJaw.



"In the time it would take Armac Martin to make 100 parts before FourJaw, the team are now able to make 165"

— Rob McGail, CEO at Armac Martin

Challenges

- | Production capacity constraints
- | Demand outstripping supply causing production back-logs
- | Increased lead times were in danger of potentially losing sales
- | No quantifiable measure of where spare capacity was

Results

- | Data-driven decisions led to selling and upgrading machines
- | Shifted production model to focus on own products
- | Improved machine utilisation positively changed operator habits



14%

Increase in utilisation



65%

Increase in parts

Capterra



GetApp



Trusted by more than 160 manufacturers



FourJaw works with manufacturers across all industries



	Automotive		Pharmaceuticals
	Aerospace		Rubber & Plastics
	Construction		Sub Contract
	Food & Beverage		And many more
	Medical		



About FourJaw

FourJaw, based in Sheffield, recognised that the prohibitive costs and complexity of traditional monitoring solutions were a major barrier for manufacturers. In response, we created a plug-and-play platform that's easy to install on any machine, old or new.

Our team at FourJaw is a diverse group of tech enthusiasts who individually and collectively share a passion to harness the power of technology to drive efficiency, productivity and profitability for manufacturers throughout the world.

Success stories

We're big advocates of promoting best practices, so we have a number of customer success stories that show how manufacturers just like you have installed and used FourJaw to enable them to overcome challenges on their factory floor.

- | [Learn from your industry peers](#)
- | [See our reviews](#)

Learning library

If you like reading about the latest manufacturing news/trends, product updates or getting helpful tips and advice, our resource area is a good place to look, it includes things like blogs, guides and webinar content we have created.

- | [Blog](#)
- | [Learning Library](#)

