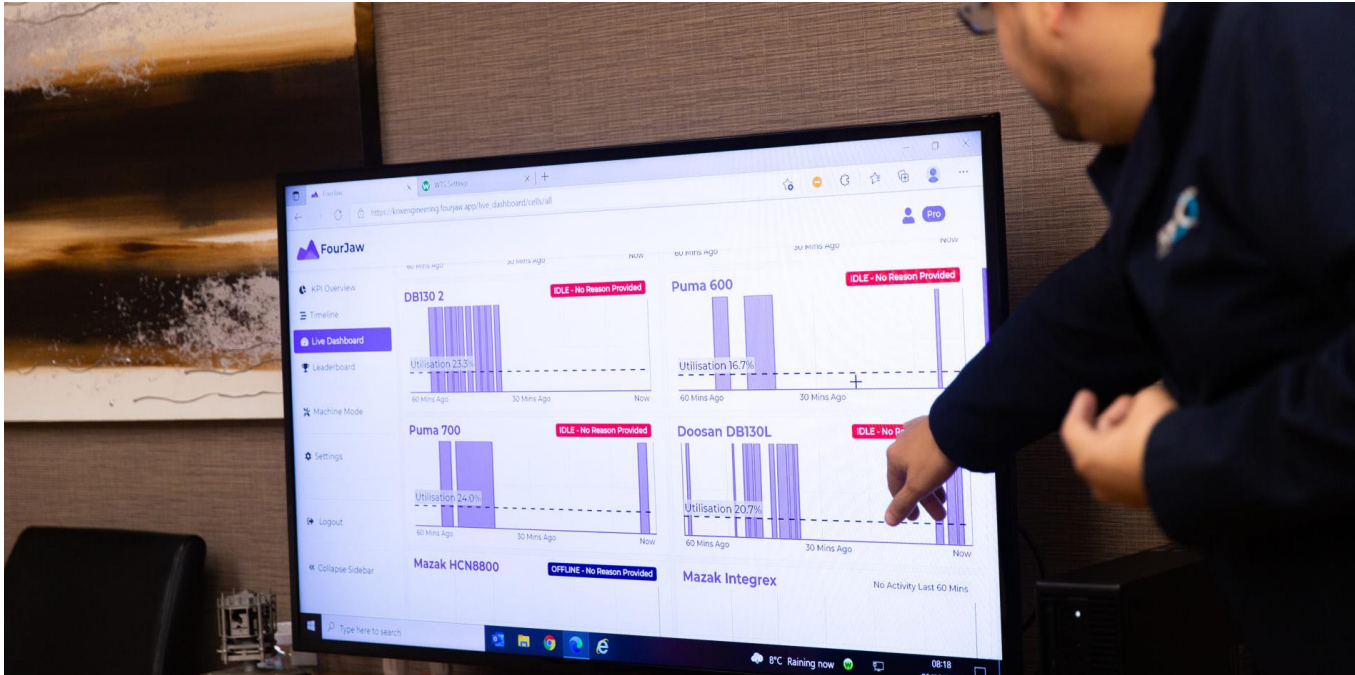


SUCCESS
STORIES:

Improving Night-Shift Productivity At KSW Engineering



FourJaw
Manufacturing Analytics



Improving Night-Shift Productivity At KSW Engineering

See how even the smallest of changes in your operations can make some of the largest differences. KSW found time savings of up to 30% on their production line, within just days of implementing FourJaw.



About KSW Engineering

Oil & Energy Manufacturer | 51-200 employees



KSW Engineering was formed in 1980, are specialists in medium to heavy precision machining and welding. They have a commitment to providing high quality products to their broad, global customer base.

They recognise, through sound investment in people, technology and plant, they can be a leading subcontractor to some of the world's most respected manufacturing companies.

To maintain and improve that position, their focus is to remain at the forefront of technological advances, whilst also anticipating and meeting the demands of the market, and we're delighted that they chose FourJaw machine monitoring solution to do just that!

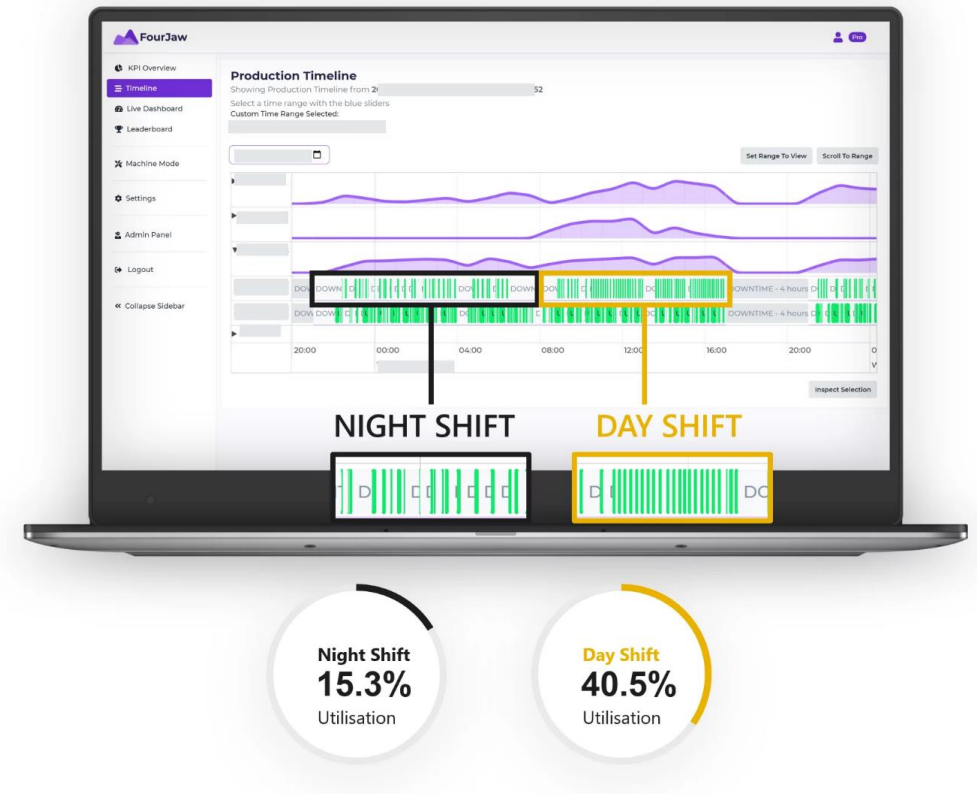
Challenge

IMPROVING NIGHT-SHIFT PRODUCTIVITY

It was found that the newly established night shift activities were significantly less productive than the day shift operations at KSW Engineering.

Using the Timeline View in the FourJaw web application, KSW Engineering discovered that the night-shift was underperforming in comparison to the day shift.

Machines which run the same components day-in day-out and had been a staple part of the company's product line for many years, were suddenly hitting problems. With no overnight manager cover of the shopfloor – a role performed by a chargehand — it was difficult, if not impossible, to determine the origins of the problem.



Solution

REAL-TIME DATA INSIGHTS

The firm decided to extend the use of the FourJaw App across the factory floor to help identify where the problem was occurring and why. The App was linked up and operations managers watched with interest the numbers during the first day shift. Each machine ran like clockwork, with regular up time and down time and clear visibility of activity on the machines.

A few hours into the night shift, the app detected that an operator was taking twice as long to change over a component as his day shift colleague on one of the machines in the cell.

When asked, the busy operator, revealed that he was performing 100% inspections on all parts to ensure no scrap was produced.

The night chargehand was able to show that by checking 10% of features with the machine stopped he could safely take the part out – provided these dimensions were correct – and carry on machining the next item, completing his inspection report while machine is running.



“FourJaw is giving us the ability to see areas of downtime that in the past we would have had to micromanage to discover.”

Harry Gray

Sales Manager at KSW Engineering



Benefits

MACHINE MONITORING DELIVERS 12 PER CENT UPLIFT IN UTILISATION

This subtle change in operator activity produced an immediate boost to night-shift productivity, going from 34 per cent on day one to 47 per cent machine utilisation on day two and constant from that day onward.

The company has also noticed an additional boost to productivity. By levelling the playing field of the shop floor, and making performance measurable and visible, the FourJaw App has tapped into a competitive streak among operators resulting in even higher levels of machine uptime.

The company said:

“Overall this has resulted in time savings of around 25-30 per cent on this product line which is a huge benefit moving forward.”



Ready To Talk?

Get in touch so we can demonstrate how quick and easy it is to start finding productivity improvement opportunities across your factory floor.

**FourJaw, Oxo House, 4 Joiner Street,
Sheffield, S3 8GW, United Kingdom**

PHONE

+44 (0) 114 400 0158

EMAIL

info@fourjaw.com

Assistance hours:
Monday – Friday, 9am to 5pm

