

EPICOR

Epicor for Manufacturing



MANUFACTURING



Introduction

As innovation propels your manufacturing business growth, enterprise resource planning—the very backbone of your information systems—must keep pace. Epicor understands that manufacturers worldwide must identify, consider, and respond to a new set of challenges and variables each day. Some challenges result from rapid growth and managing an extended global enterprise. Others are a result of internal inefficiencies and silos of information that affect your ability to further innovate and compete on dimensions such as cost, quality, and schedule. You need the ability to easily adapt to new manufacturing methods, changing customer requirements, and evolving business strategies.

Epicor for Manufacturing is powered by Kinetic. Kinetic is the cloud ERP made with manufacturers, for manufacturers. Trust Epicor know-how to accelerate growth and help maximize innovation and profitability.





Made with Manufacturers for Manufacturers

Capture the true value of cloud ERP with Kinetic, a solution made with manufacturers, for manufacturers. An intuitive, configurable, and guided user experience with embedded learning helps you maximize your profitability with real-time business intelligence and built-in collaboration tools. Kinetic has the functionality you need to run a modern, future-ready business poised to capitalize on data, transform digitally, and innovate without limits. All the features you need to scale, compete, and attract top talent to your organization. Trust the manufacturing expertise of Epicor to gain the momentum and know-how you need to accelerate growth and innovation. This is the future-focused face of manufacturing.

Synchronizing the complex relationships that determine supply, demand, and fulfillment helps companies reach new, industry-leading levels of business performance. You can compete globally—seeking new opportunities and

bridging geographic boundaries—by streamlining supply chain processes and using technology to communicate quickly and accurately. Epicor Kinetic for manufacturing can help you achieve maximum efficiencies within the four walls of each plant, while providing cutting-edge technology to span across your global business to foster superior performance and innovation.

Epicor Kinetic is a tightly integrated software solution for identifying and planning the resources you need to capture, produce, ship, and account for customer orders. It provides the ability to access the right information, from the right source, at the right time, empowering all users through the supply chain to make informed decisions.

Industry-leading technology makes it possible for manufacturers of all sizes and their suppliers to derive the benefits of real-time collaboration from Epicor solutions. Epicor enables manufacturers to provide after-

sales service at the customer site through field service management capabilities—expanding your revenue potential. Kinetic delivers deep manufacturing expertise and business momentum with ERP capabilities made for manufacturers with manufacturers.

Epicor Kinetic for Manufacturing is distinguished by its increasingly broad focus on planning and managing all resources, both within and across location and company boundaries. Power your business with a secure, tightly integrated ERP and embedded capabilities. This expanded scope is most strongly felt in the areas of Customer Relationship Management (CRM), Supply Chain Management (SCM), Advanced Planning and Scheduling (APS), Product Lifecycle Management (PLM), Advanced Manufacturing Execution System (MES), Quality Management System (QMS), field service management (FSM), and business process management (BPM) to name only a few.



Manufacturers of all sizes have recognized the value of an integrated suite rather than trying to piece disparate solutions together.

Manufacturing Focused

Epicor Kinetic is designed to support various manufacturing processes including discrete, make-to-order (MTO), engineer-to-order (ETO), configure-to-order (CTO), mixed-mode, and make-to-stock environments. Epicor continues a 50-year tradition of providing industry-leading solutions for rapidly expanding emerging manufacturers alongside midsize companies and subsidiaries of large multinationals. Epicor Kinetic is scalable and modular with rich feature sets that support your company's growth with rapid implementation and easy expansion—no matter the size and complexity of your manufacturing process. The solution offers complete flexibility when it comes to deployment. You can choose to deploy the solution in the cloud, hybrid or on-premises.

As a multidimensional solution, Epicor Kinetic for Manufacturing is uniquely positioned to manage the requirements of multiple industries with a single solution, including industrial machinery, automotive, aerospace and defense, medical device, electronics and high-tech, fabricated metals, furniture and fixtures, rubber and plastics, job shops, and more. Epicor has experience across many manufacturing industries and has developed solutions to fit the unique requirements for supplying these industries with robust functionality, including:

- Centralized customer relationship management
- Efficient sales and service management
- Rules-based visual product configuration
- Real-time IIoT driven equipment production and process monitoring
- End-to-end management of complex multiphase projects
- Quality and compliance management
- Extensive product data management including product lifecycle management (PLM)
- Embedded advanced planning and scheduling (APS)
- Comprehensive materials management including cradle-to-grave serial and lot control
- Support for lean initiatives
- Full-featured supply chain management
- Embedded maintenance management
- Integrated field service automation
- Global financial management and accountability
- Portals, dashboards, business process management, and enterprise search to support business performance management initiatives
- Enterprise-wide digital collaboration
- Access to system data and functions through a mobile, browser-based experience
- Supplier and Customer EDI and B2B integration
- Intuitive user experience including role-based active home pages

Epicor Kinetic is a powerful yet easy to use manufacturing solution available to manufacturers worldwide. It's fully integrated and loaded with innovative tools to synchronize supply, demand, and fulfillment as a means to reach new, industry-leading levels of business performance.



Immediately Productive and Simple to Use

The rise of consumer technologies, easy-to-use apps, and social networks has created a new imperative for business applications. Traditional ERP can be notoriously complex to implement, use, and maintain. Kinetic offers a different experience.

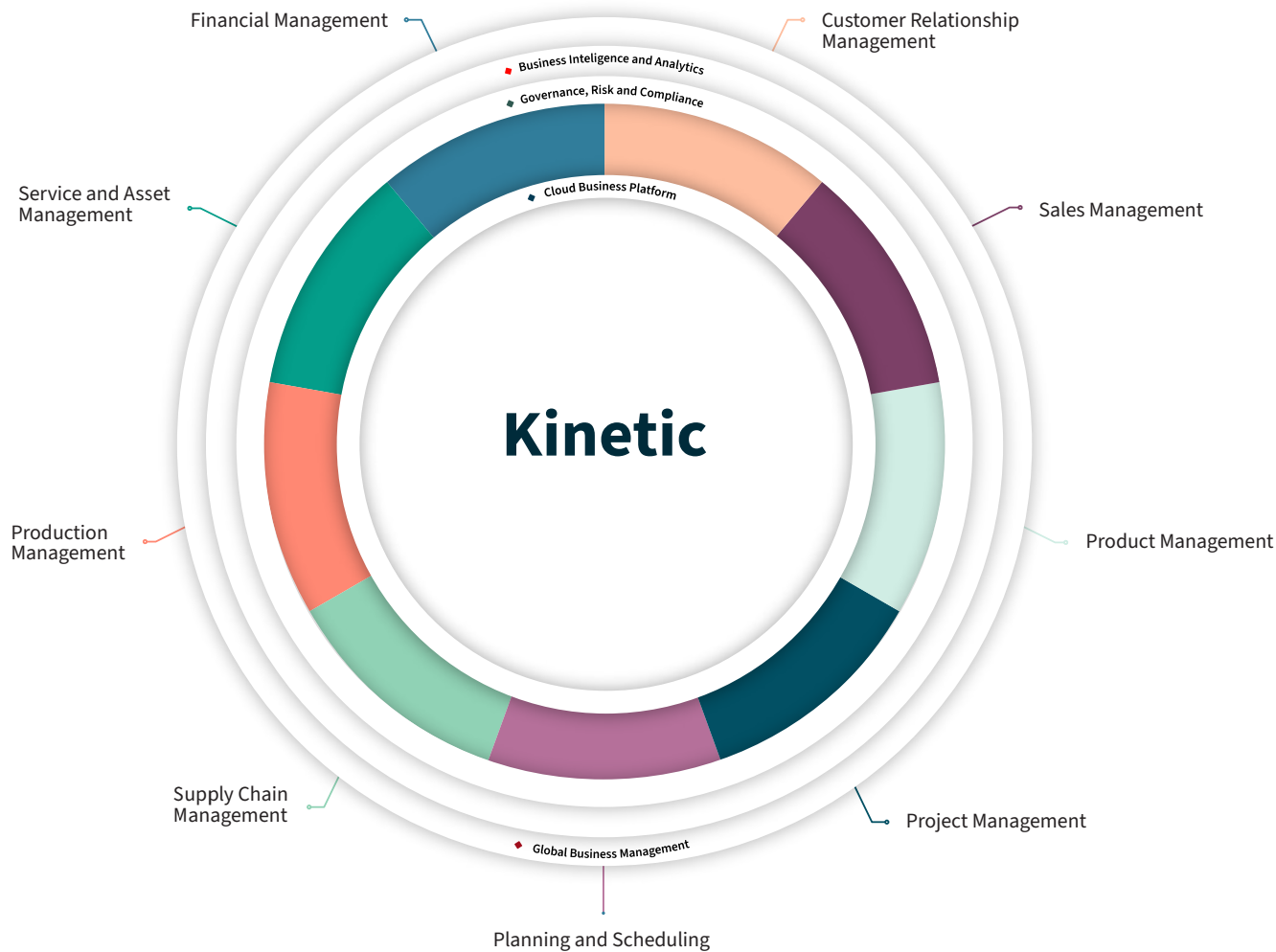
Kinetic offers a mobile, browser-based user experience that enables employees to complete tasks in less time while optimizing their personal workflows. The Kinetic user experience delivers a user experience that is: made for use anywhere, browser-based in the cloud, on any device with a consistent experience.

Made for personal use with guided workflow, easy tailoring, and the ability to connect digitally. Made for efficiency and greater productivity with a simple, easy to use interface that offers industry-focused features and leverages intelligence for greater automation.

To augment the inherent usability of Epicor Kinetic, we deliver an embedded Help and Support panel for easy access to the guided help you need. Training for employees is available through Epicor Learning which includes a complete training experience with a mapped and planned program of informative videos and hands-on exercises.

Collaboration Ignites Innovation

The principles of ERP are founded on the benefits of working together. Embedded within Epicor Kinetic is Collaborate, a social tool for digital messaging and collaboration. This solution supports the fundamental shift in the way organizations collaborate, both internally and externally. Depending on circumstances, examples might include collaborating around a project, a customer incident, a quality issue, a procurement challenge, or a planning event. Collaborate changes your relationship with ERP, enabling everyone to securely engage within your businesses and leverage the Kinetic knowledge base to make more informed decisions and foster innovative ideas.



Financial Management

- Global Engines
- General Ledger
- Accounts Receivable
- Accounts Payable
- Tax Automation
- Financial Reporting
- Financial Planning and Analysis
- Credit Card Payments
- Cash Management
- Credit and Collections
- Asset Management

Customer Relationship Management

- Epicor Contact Management
- Epicor Marketing Management
- Epicor Lead and Opportunity Management
- Epicor Case Management
- CRM Mobile
- Integration to Salesforce.com*

Product Management

- Bill of Materials
- Routings
- Engineering Change and Revision Control
- Document Management
- CAD Integration
- Product Lifecycle Management
- Product Costing
- Product Configuration

Planning and Scheduling

- Forecasting
- Master Production Scheduling
- Smart Demand Planning
- Epicor Material Requirements Planning (MRP)
- Scheduling and Resource Management
- Advanced Planning and Scheduling

Production Management

- Epicor Job Management
- Advanced Production
- Kanban Lean Production
- Data Collection
- Epicor Advanced MES
- Quality Assurance
- Epicor Quality Management System (QMS)

Service and Asset Management

- Service Management
- Returned Material Authorization
- Service Contract and Warranty Management
- Epicor Case Management
- Maintenance Management
- Field Service Management

Sales Management

- Estimate and Quote Management
- Order Management
- Sales Order Automation
- Epicor EDI/Demand
- Management-Point of sale
- Epicor Commerce
- Dealer Portal
- Epicor CPQ

Project Management

- Project Planning and Analysis
- Project Generation
- Project Billing
- Resource Management
- Contract Management
- Planning Contract
- Time Management
- Expense Management
- Epicor Advanced Project Management (APM)

Supply Chain Management

- Purchase Management
- Supplier Relationship Management
- Supplier Portal
- Inventory Management
- Epicor Advanced Materials Management
- Advanced Unit of Measure
- Shipping and Receiving
- Epicor Quick Ship
- Epicor Warehouse Management System (WMS)
- Supplier EDI and B2B Integration

Governance, Risk and Compliance

- Corporate Governance
- Risk Management
- Security Management
- Business Process Management
- Global Trade Compliance
- Electronic Reports Engine
- Environmental and Energy Management

Global Business Management

- Multicompany Management
- Multicurrency Management
- Global Multisite Management
- Multilingual Data Management
- Master Data Management
- Scalable, Distributed Deployment
- Global Engines

Cloud Business Platform

- Mobile, Browser-Based Experience
- Epicor Automation Studio, Powered by Workato: iPaas + Automations
- Epicor Virtual Agent
- Epicor Collaborate
- Enterprise Search
- Epicor Learning
- Epicor Business Process Management (BPM)
- Epicor Enterprise Content Management (ECM)
- Business Workflow Automation
- IoT and IIoT Applications
- Epicor Commerce
- Epicor ED and B2B Integration
- Electronic Reports Engine
- Epicor Application Studio Configuration
- REST Services and Epicor Functions
- Updatable Dashboards
- Epicor Integration Cloud
- Deployment Flexibility
- Microsoft Azure Cloud
- Security Management
- Data Fabric

Business Intelligence and Analytics

- Operational Reports/Dashboards/IO/OT/EE
- Descriptive Analytics (Business and Financial User Reporting/Dashboards)
- Diagnostic Analytics (Scorecards/KPIs, Financial Planning)
- Predictive Analytics (Forecasting)
- Data Warehousing
- Role-Based Analytics and Business Intelligence
- Mobile Business Intelligence

Lean Initiatives

With increased global competition and customer demand for product flexibility alongside smaller, more frequent orders, businesses are widening the scope of lean principles to focus not only on manufacturing processes, but to encompass all processes that contribute to the bottom line.

Epicor is uniquely positioned with fully integrated modules and features such as customer relationship management, supplier relationship management, work-order-less “Kanban” control on the shop floor, lean metrics, and Epicor service-oriented architecture (SOA, the business process management (BPM) workflow to reduce waste in internal processes and ultimately enhance profitability.

Deployment Flexibility

Leadership in global cloud ERP is in the DNA of Epicor and meeting the changing needs of your business with flexible cloud solutions delivers on business growth today and into the future - wherever that growth takes you. Kinetic is cloud ERP with deployment choice of public cloud, on premises, or hybrid cloud. Hybrid cloud allows businesses to step into the cloud with extensions without running their entire ERP in the cloud. As the solution offered uses the same technology, regardless of cloud or on premises, businesses can also choose to self-host the solution or work with a 3rd party. Multinational organizations benefit from additional flexibility as distributed business units have deployment choices across the enterprise with some sites choosing cloud and others choosing on premises deployment. The latter because of the region or remote geography challenges for cloud.

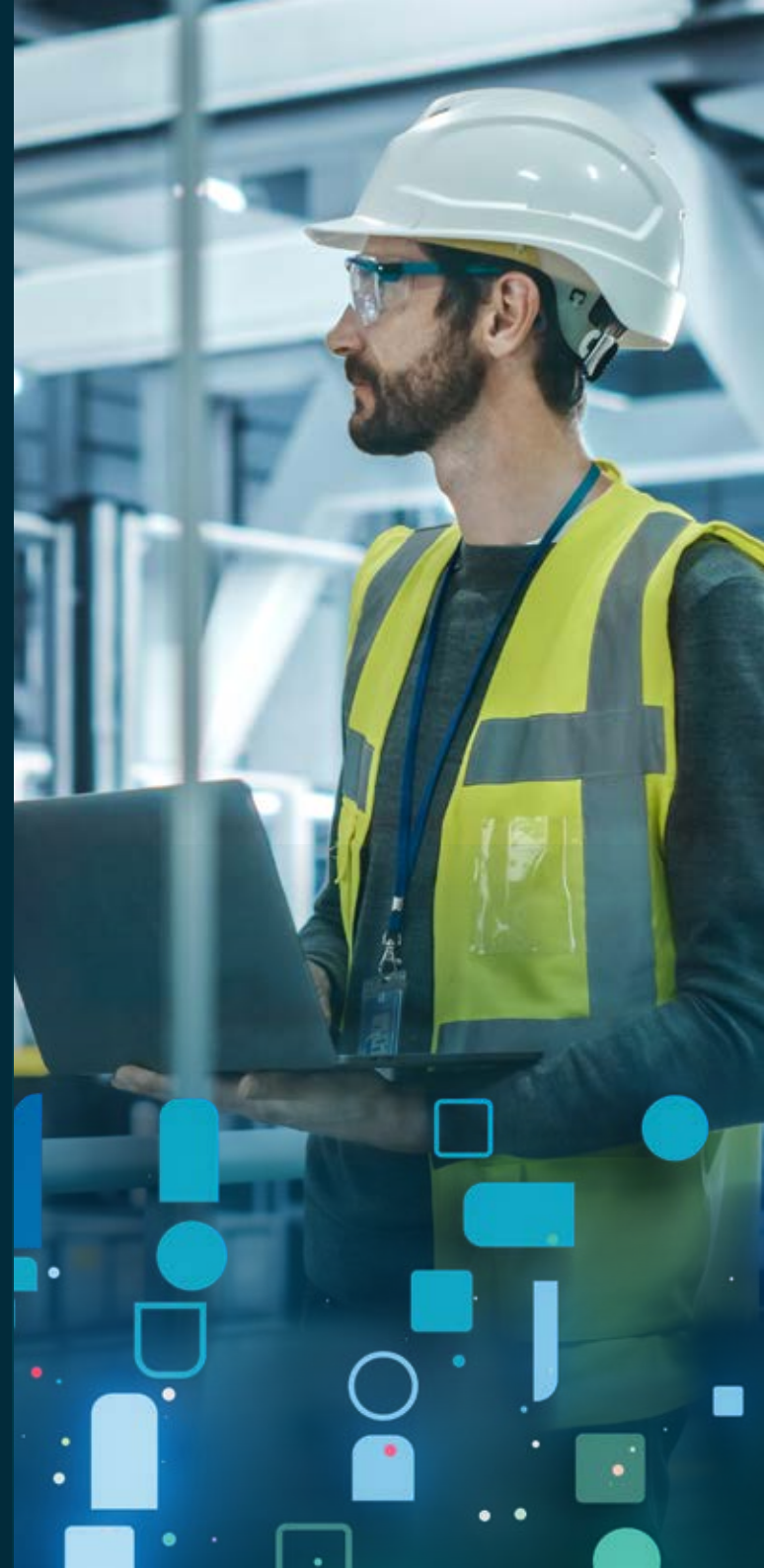
Connected Systems Help Businesses Execute Strategies

The Epicor architecture of industry-leading technologies is at the core of Epicor Kinetic. It is the foundation upon which businesses execute strategies and achieve objectives, operating seamlessly and effectively in the background and enabling highly optimized business productivity.

Epicor has been a consistent leader and innovator for global ERP solutions built using a state-of-the-art connected systems architecture. A connecting systems focus based on SOA was chosen because ERP thrives as a high-performing, approachable service that connects people, systems, and processes. Business strategy today is so very tightly coupled with technology strategy—and technology is partly responsible for shaping the culture within a company that ultimately drives competitiveness.

Responsive ERP That is as Mobile as You Are

The days of coming to the office, logging into an ERP system, then leaving it all behind at the end of the day are long gone. Work has moved beyond a PC in a cubicle or office to the customer site, on the plant floor or in the warehouse, in the field, or on a supplier visit. In today's always-connected world, users demand access 24/7, with a consistent experience that flows between devices. Support for touch and gestures and the ability to fully interact with business systems—beyond simply drilling into analytics—is the new normal.



End-user demands for greater control over the user experience are increasing. Individuals expect to be able to manipulate screens and dashboards in a manner that is relevant to a particular role, task, or point in time. Epicor recognizes the challenges these competing demands can have, and the implications for ERP to help ensure enthusiastic adoption throughout the organization. We focus on ensuring that our business architecture and business solutions enable you to stay ahead of the curve, and your users are fully productive however they choose to interact with Epicor Kinetic.

We're Here for the Hard-working Teams that Keep the World Moving

Epicor is the essential partner for businesses that make, deliver, and sell the things that keep the world running. With a history of almost 50 years in ERP software, we have evolved to provide end-to-end productivity solutions for five core industries: Epicor for Manufacturing, Epicor for Distribution, Epicor for Retail, Epicor for Building Supply, Epicor for Automotive, and Epicor for Care.

Within each of these industries, we offer a portfolio of platforms and modules, secure in the cloud, curated to provide you with a complete solution set for your business. We're cloud first with the flexibility to offer choice to those who are on the journey to cloud, so you have exactly what you need to run your business today and tomorrow. Our solutions are made with you, for you. Our team members come from the industries we serve – we know your business because we've been in your shoes. With innovative technology, we're here to accelerate your ambitions to compete and win.

Supporting Extended and Global Operations

With competitive pressures driving many manufacturers to expand globally where labor is considerably less expensive coupled with recent trends in plant consolidations, many manufacturers today, both large and small, find themselves suddenly managing multiple sites disparately.

Epicor Kinetic for Manufacturers offers comprehensive multisite capabilities coupled with a global presence to meet your company's requirements for local support. Competing globally and domestically - bridging geographic and strategic diversity and eliminating supply chain inefficiencies—can be accomplished with the technologies to streamline intra- and inter-company processes and communicate quickly and accurately.

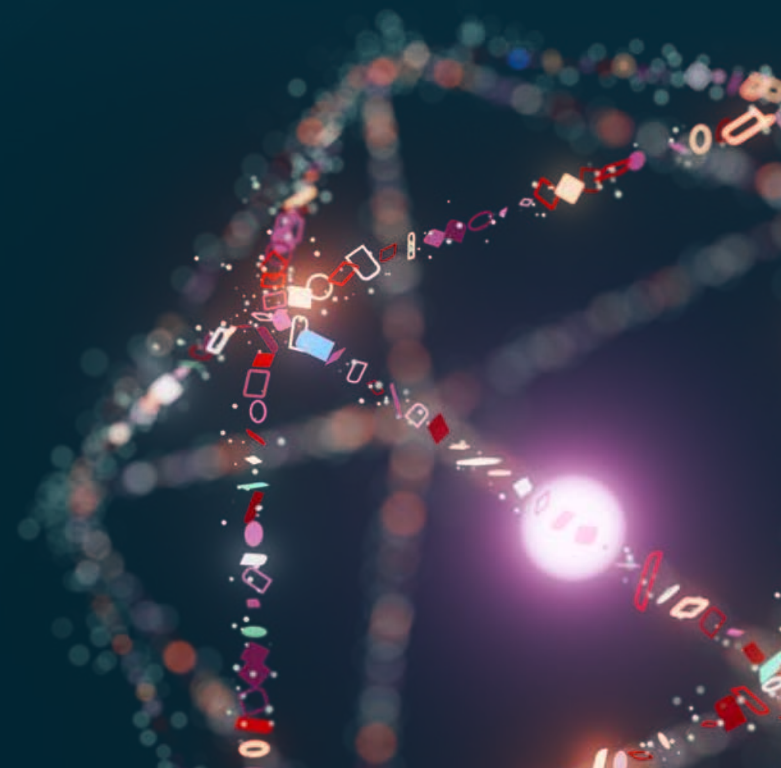
Synchronization of complex relationships which determine supply, demand, and fulfillment is the means to reaching new, industry-leading levels of business performance, all while adhering to global standards for trade of parts such as GTIN-14 and RoHS compliance. Epicor for Industrial Machinery can help you achieve maximum efficiencies across your globally extended enterprise.

Industry Leading Service and Support

Epicor has 50 years of experience delivering industry-focused, world-class solutions, and ongoing customer care and service to over 24,000 customer installations. It is a true global solutions partner with support offices all over the world. The key vehicle that transforms

Epicor for Industrial Machinery into a successful business solution is our Signature Implementation Methodology. Epicor delivers one of the most cost-effective and efficient techniques to plan, design, validate, and deploy your Epicor solution.

Staffed with direct employees around the globe who are properly trained and equipped with world-class implementation tools, Epicor follows our proven 5-stage Signature Methodology designed specifically around Epicor software and our customers. The end result is an on-time, on-budget implementation of your Epicor solution that allows your company to quickly begin using Epicor for Manufacturing in day-to-day operations helping you save time and money by providing broad functionality at a lower total cost of ownership.





We're here for the hard-working businesses that keep the world turning. You're the companies that make, move, and sell the things we all need. Trust Epicor to help you do business better. Your industry is our industry, and we understand you better than anyone. By working hand-in-hand, we get to know your business almost as well as you do. Our innovative industry solution sets are carefully built to fit your needs and respond flexibly to your fast-changing reality. We accelerate ambitions, whether you want to grow and transform, or simply become more productive and effective.

That's what makes us the essential partner to the world's most essential businesses.

Contact Us Today: info@epicor.com | www.epicor.com

This document is informational only. Epicor Software Corporation makes no guarantees, representations, or warranties to the information and disclaims, any implied warranties, such as fitness for a particular purpose, merchantability, satisfactory quality, or reasonable skill and care. Testimonials are unique to the particular user and may vary. Epicor and the Epicor logo are trademarks of Epicor Software Corporation. Other trademarks are the property of their respective owners. Copyright © 2024 Epicor Software Corporation. All rights reserved. Rev. March 5, 2024.

