



HIGHLY SECURE MULTI-POSITION DRAWER DISPENSING SYSTEM

DESKTOP TO TOWER EXPANDABLE WITH CLOUD BASED SOFTWARE

THE MACHINE

CONSTRUCTION

A machine can hold a single drawer or more up to a total of twenty-five using a configurable column design.

Machines can be singular, or stacked up to four units high.

A touchscreen screen can be located on the top if required as machines can be run directly from a PC.

VERSATILE BASE

Flat plate, kick plate, castor wheels and forklift stands are available to suit.



SCALABLE

Machines are modular in order to affordably grow with a business into a four-high floor standing tower.

SEQR^{RX}



25 INTERCHANGEABLE DRAWER SIZES



THE DRAWERS

PATENTED NEW APPROACH

Lightweight aluminium drawers hold ten standard compartments and a utilities space at the rear to house chiller, heating and weighing componentry if required. It is possible to house an onboard battery which is charged upon docking into the machine.



INSERT PACK WIDTH

Drawers are designed to house width-wise insert packs to maximise capacity following feedback from a premier global tooling brand.



FULLY REMOVABLE

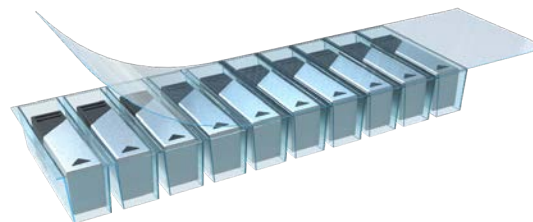
A drawer can be unlocked, removed and replaced in under ten seconds.

 VIDEO: [SEQURRX.COM](https://sequrrx.com)



USP: RAPID REFILL

Fully removable drawers allow manufacturers to prefill sealed inserts to be placed inside empty drawers, reducing machine refill time and retaining stock accountability from factory.



SOFTWARE

SEQR RX

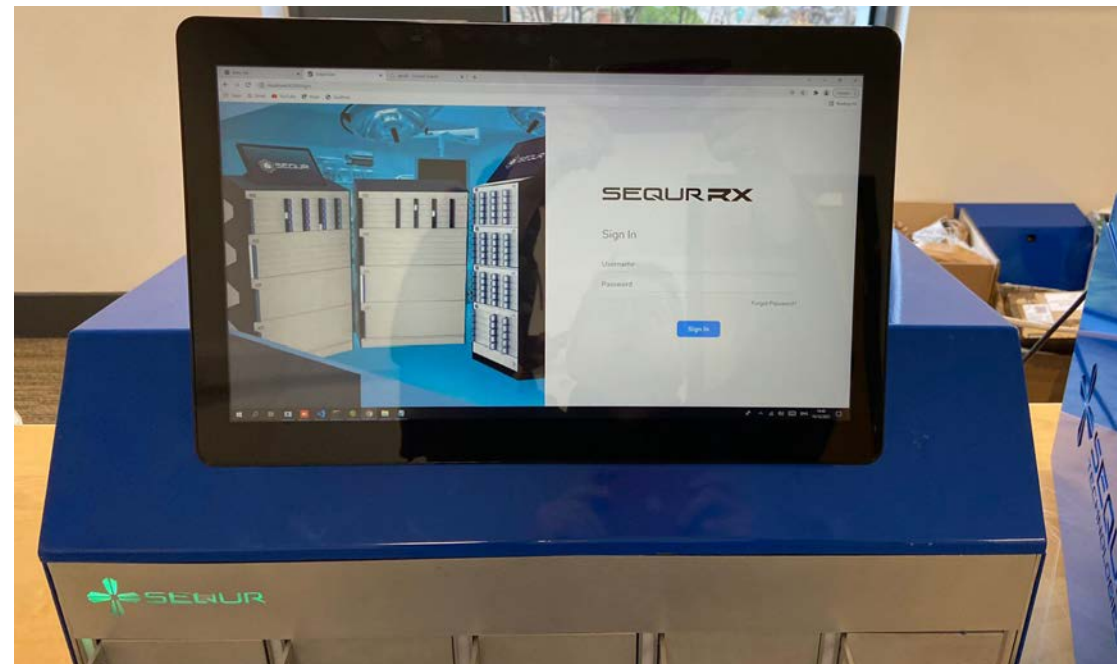
CLOUD ISSUE FUNCTIONALITY

If there is a problem connecting to the cloud the machine will function until connection is re-established upon when a stock update will run.

INDEPENDENT OR INTEGRATED

Software has been developed to run the hardware, or if existing programs are preferred these can be integrated to control the SEQR machine range.

MACHINES CAN RUN USING EXISTING PLATFORMS



HIERARCHICAL ACCESS LEVELS

Full administration rights safeguard machine access with account login.

CREATIVE

UNLOCKING POSSIBILITIES

The versatility of a smaller sized machine allows easier physical and financial integration into a company.



OPTIMISING SPACES






Desktop, tower configurations and even wall mounted installations enable optimisation of space and budget.



CAPACITY

FOOTPRINT MAXIMISATION

A machine can hold a single drawer or more up to a total of twenty-five using a configurable column design. Machines can be singular, or stacked up to four high. A touchscreen screen can be located on the top if required as the machines can be run directly from a PC. Overall width of a five column machine is 776mm.

	Model	Maximum compartments	Height inc. screen (mm)
	Desktop With screen	250	646
	X2 Stack With screen	500	946
	X3 Stack With screen	750	1246
	X4 Stack Tower With screen	1000	1546
	X1 Stack No screen	250	300

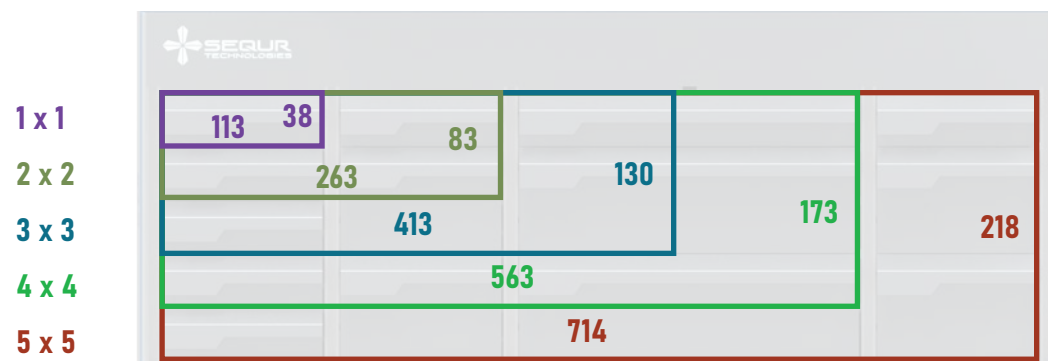
DIMENSIONS

Drawer size variations: 25

Drawer compartments: 1 to 10 per drawer

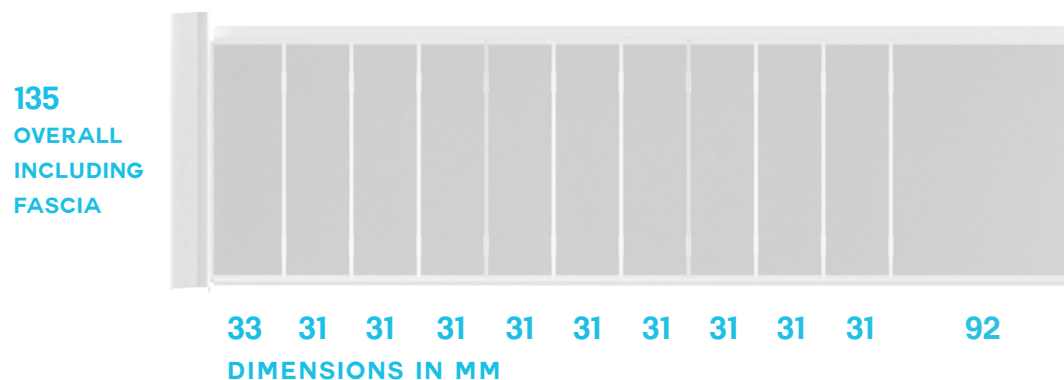
Drawer compartment type heights and widths

Internal drawer capacities from front of machine (mm).



Drawer compartment depths and number

Drawers consist of 10 compartments and a rearmost utility space.



RANGE

SEQR RX

MODULAR IN NEW WAYS

Location design may demand a non-conventional machine install to optimise space. Many dispensing machines occupy a large footprint and volume to house operational mechanism. New technology enables machine depth to be minimal, allowing dispensing from locations not previously achievable.

SEQR machines can be desk positioned, operate as freestanding towers or even be wall mounted.



PORTABLE TECHNOLOGY

Weight detection and locker style machines are as versatile as the drawer machine variant, utilising the same method to miniturise hardware.



ACCESSORIES

MONITORS FEATURING MS WINDOWS

High performance touch computers are built into the monitors allowing expansion of accessories through simple plug and play, including a port expansion module to maximise flexibility.



21.5" TFT LCD or 15.6" TFT LCD

OS:	Windows 10 IoT 2021 LTSC	Processor:	i3-1215UE 3.3GHz 6 core Gen 12
Max. Resolution:	1920 x 1080	15.6" Brightness:	450 nits (No Touch), 400 nits (PCAP)
Contrast Ratio:	1000:1	21.5" Brightness:	350 nits (No Touch), 315 nits (PCAP)
Aspect Ratio:	16:9	View Angle:	H: 178°, V: 178°
		Video Port:	1 x HDMI (up to 1920 x 1080 @60Hz), 1 x USB-C (Alt mode + PD out 12V@3A+USB 2.0)

MSR READER

Compatible with our monitor range via USB-C, this MSR is bi-directional, three track and encrypted.



Swipe Speed:	ISO Standard Card : 5-60 ips
Swipe Direction:	Bi-directional
Number of Tracks:	Reads up to 3 Tracks (supports TDES encryption with DUKPT key management)
Power Supply:	+5VDC, +/-5%
Power Consumption:	(typical) 7mA max.
Interface:	USB-C
Supported Formats:	ISO 7811, AAMVA, up to three tracks of magnetic encoding
Supported:	Emulation Modes Keyboard Emulation mode, Uniform defined HID Device mode (HID MSR)

SEQR RX

CAMERA

Designed to integrate with SEQR supplied monitors, this 8MP camera connects via USB-C and allows full HD video with 8M sensor resolution all inside an angleable casing.



Resolution:	3264 x 2448 (8M) @15fps, FHD 1920 x 1080 @30fps
Compliance:	RoHS, REACH
Lens composition:	Plastic + IR Filter (5E)
CMOS image sensor:	1/4" 8M CMOS Sensor
Active array size:	3264 (H) x 2448 (V)
Pixel size:	1.12 um x 1.12 um
Image format output:	YUV, MJPEG
Electrical:	USB 5.0V ±250mV
Temperature range:	0° ~ 55°
Focus mode:	Fixed focus @10cm

BARCODE SCANNER

New to the market, this scanner unit integrates seamlessly into the SEQR monitors via USB-C. Extremely motion tolerant, its bracket allows rotation and locking during usage.



Barcode engine:	Honeywell N4680
Resolution & FPS:	640 x 480 at 120 fps max
Motion tolerance:	6 m/s
Field of view:	40° horizontal x 30° vertical
Symbol contrast:	20%
Supported modes:	USB HID Keyboard Mode, USB Serial Mode, HID POS Mode
Ideal scan distance:	36 mm to 747 mm with good barcode quality
Viewing Angle:	40° horizontal x 30° vertical
Operating temp.:	-30°C to 60°C
Storage temp.:	-40°C to 70°C
Humidity:	-40°C to 70°C